



WICHITA STATE
UNIVERSITY

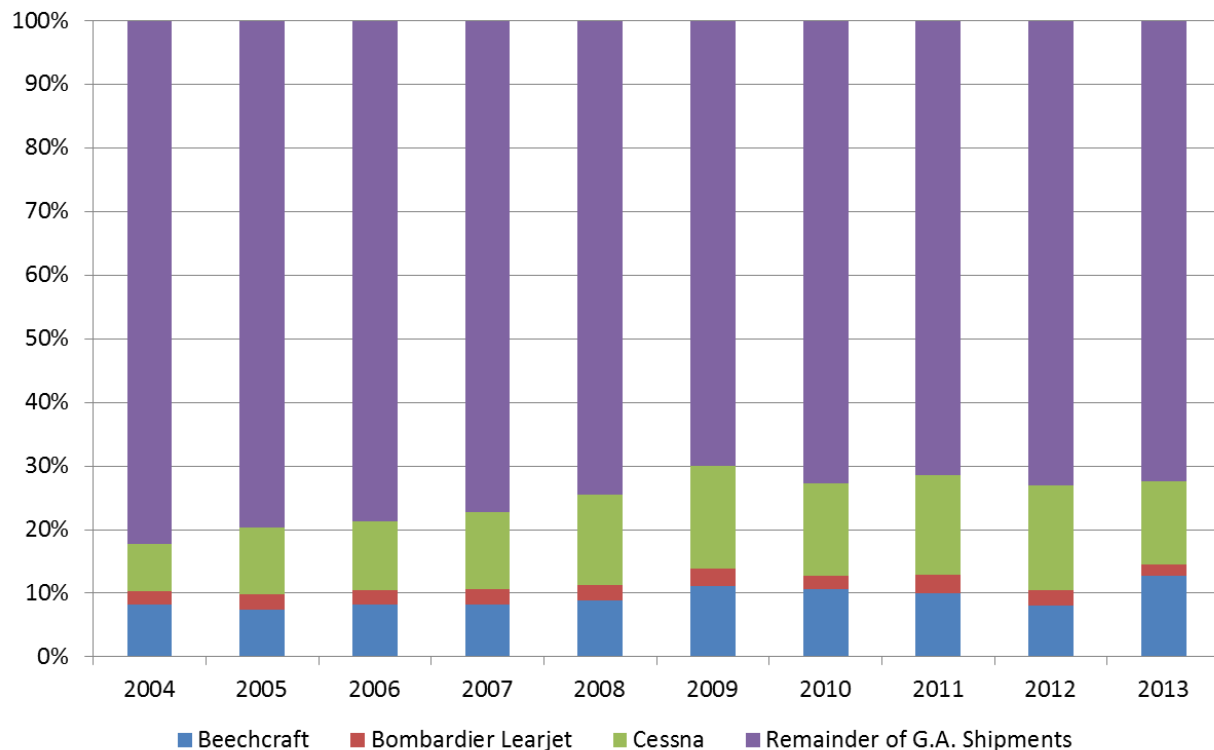
W. FRANK BARTON
SCHOOL OF BUSINESS

Center for Economic Development
and Business Research

Wichita General Aviation Shipments

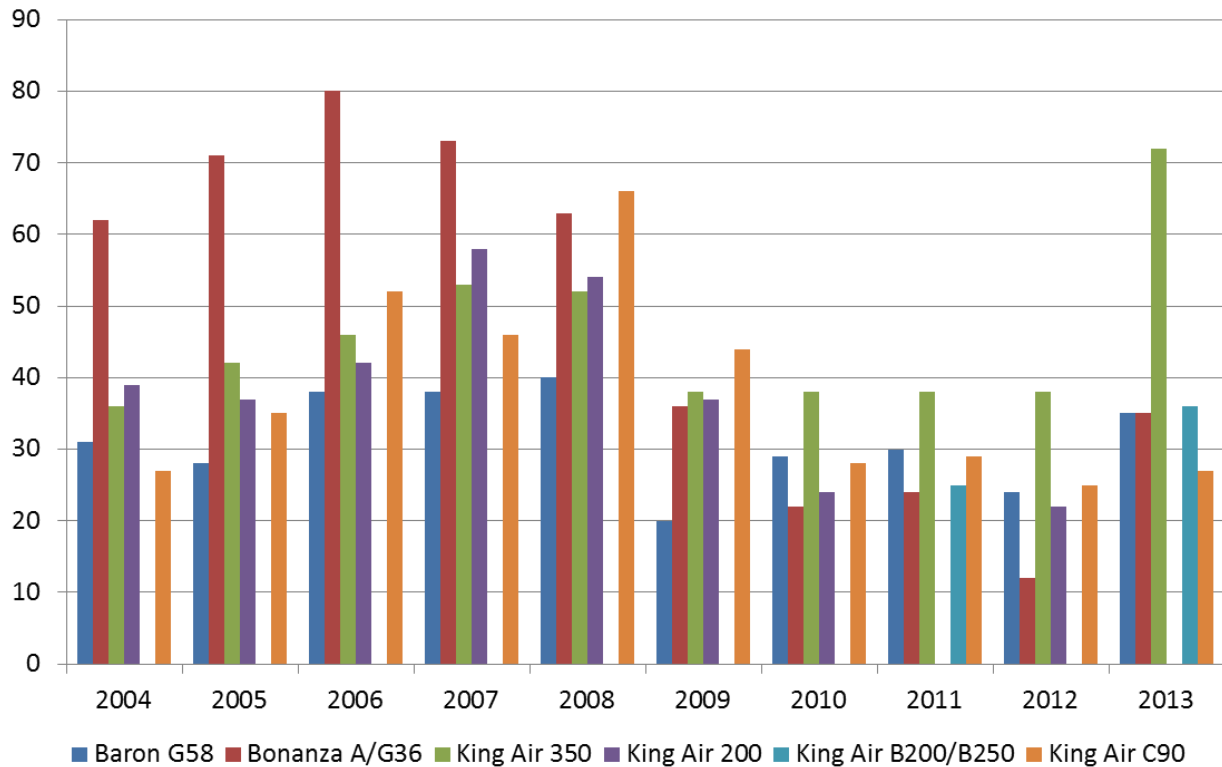
The purpose of this report is to determine the percentage of U.S. general aviation shipments that were manufactured by Wichita original equipment manufacturers over the past 10 years. The aircraft models examined in this report do not include those models shipped from other company sites in the United States. For example, the Cessna Aircraft facility in Independence, Kan., manufactures most of Cessna's single-engine aircraft, as well as the Citation Mustang and Citation M2 business jets. These products have a significant positive impact on Wichita's economy, as well as that of the state of Kansas. However, we've chosen to limit the scope of this report to the planes that are delivered from Wichita OEMs. Data was obtained from the General Aviation Manufacturers Association's [online database](#).

Percentage of U.S. General Aviation Shipments Manufactured by Wichita Original Equipment Manufacturers



Although Wichita’s aircraft manufacturing industry experienced a significant downturn during the most recent recession, losing 14,600 aerospace product and parts manufacturing employees,¹ the percentage of U.S. general aviation shipments delivered from Wichita has continued to be higher than pre-recession levels. The chart above shows the percentage of Wichita OEM shipments at 30.1 percent in 2009, with the percentage remaining reasonably stable, between 27 and 29 percent from 2010 through 2013. These percentages surpass pre-recession levels of 17 to 26 percent, in 2004 through 2008.

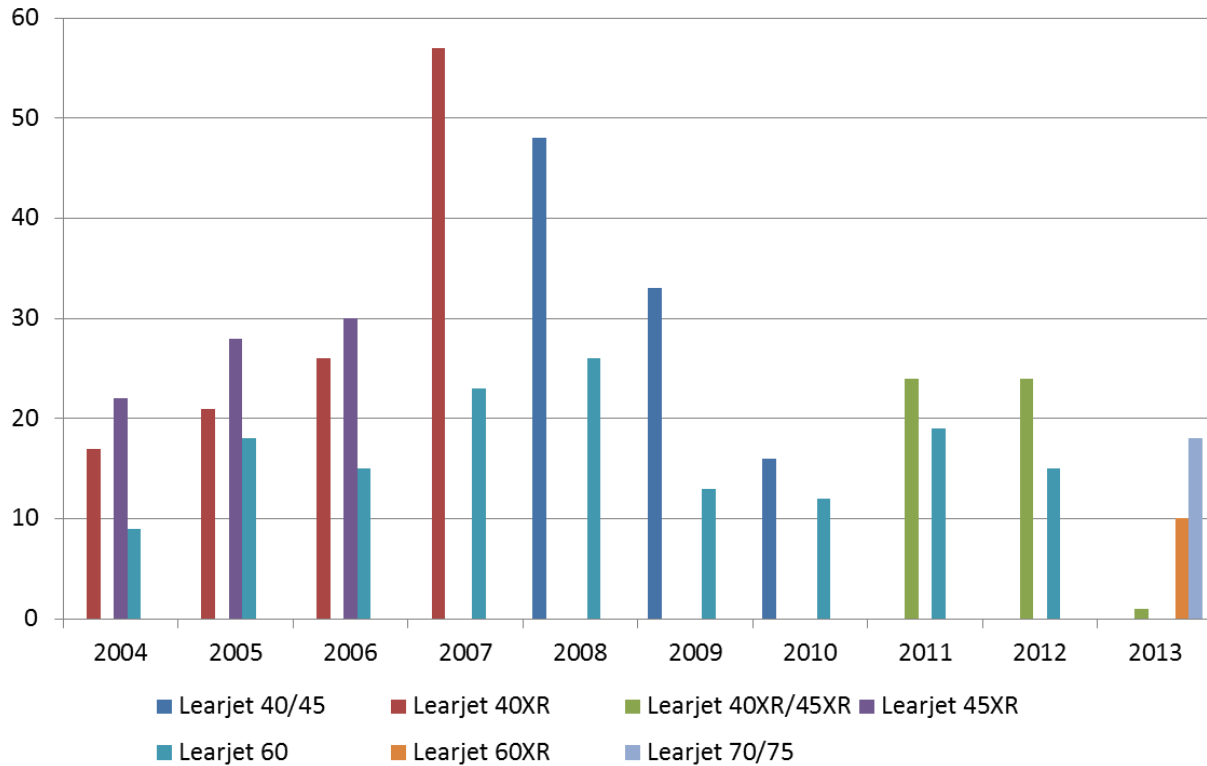
Beechcraft Aircraft Shipments From Wichita by Model



Beechcraft Aircraft Shipments From Wichita by Model										
Model	2004	2005	2006	2007	2008	2009	2010	2011	2012	2013
Baron G58	31	28	38	38	40	20	29	30	24	35
Bonanza A/G36	62	71	80	73	63	36	22	24	12	35
King Air 350	36	42	46	53	52	38	38	38	38	72
King Air 200	39	37	42	58	54	37	24	0	22	0
King Air B200/B250	0	0	0	0	0	0	0	25	0	36
King Air C90	27	35	52	46	66	44	28	29	25	27
Total	195	213	258	268	275	175	141	146	121	205

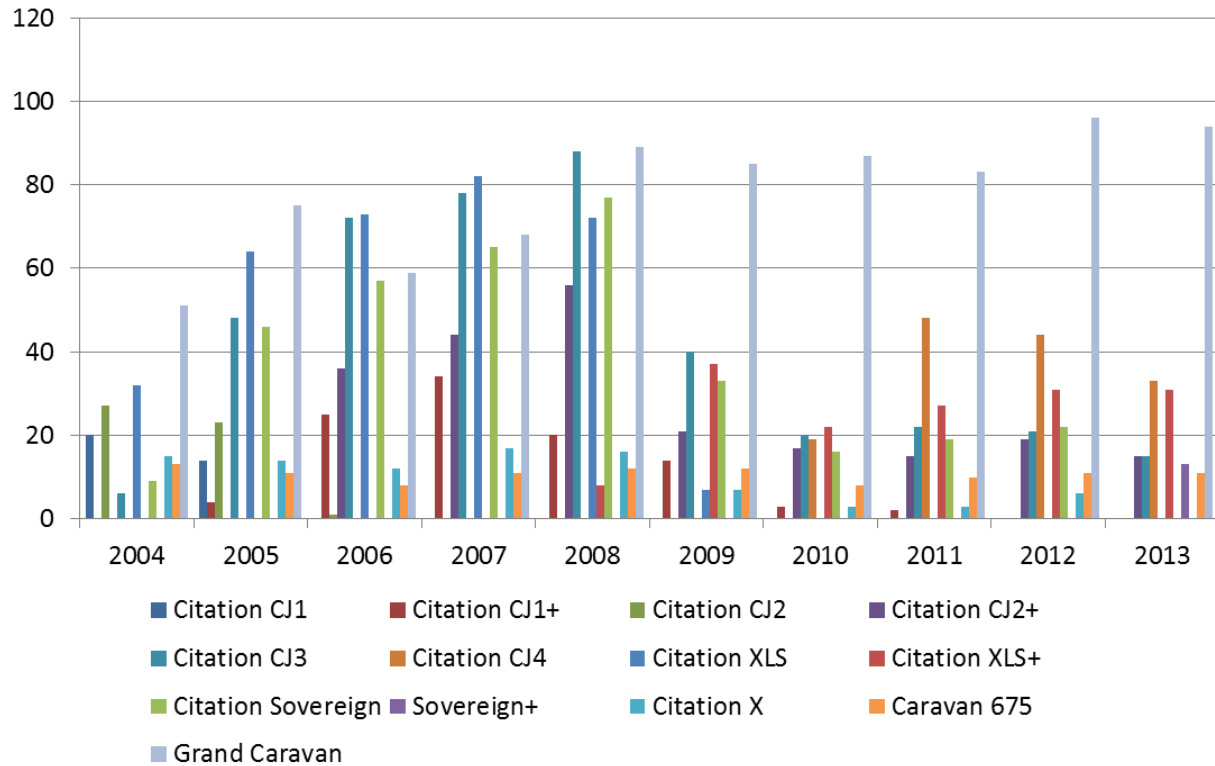
¹ Annual average 2008 compared to September 2014 aerospace product and parts manufacturing employment in the Wichita MSA, not seasonally adjusted.

Bombardier Learjet Aircraft Shipments From Wichita by Model



Bombardier Learjet Aircraft Shipments From Wichita by Model										
Model	2004	2005	2006	2007	2008	2009	2010	2011	2012	2013
Learjet 40/45	0	0	0	0	48	33	16	0	0	0
Learjet 40XR	17	21	26	57	0	0	0	0	0	0
Learjet 40XR/45XR	0	0	0	0	0	0	0	24	24	1
Learjet 45XR	22	28	30	0	0	0	0	0	0	0
Learjet 60	9	18	15	23	26	13	12	19	15	0
Learjet 60XR	0	0	0	0	0	0	0	0	0	10
Learjet 70/75	0	0	0	0	0	0	0	0	0	18
Total	48	67	71	80	74	46	28	43	39	29

Cessna Aircraft Shipments From Wichita by Model



Cessna Aircraft Shipments From Wichita by Model										
Model	2004	2005	2006	2007	2008	2009	2010	2011	2012	2013
Citation CJ1	20	14	0	0	0	0	0	0	0	0
Citation CJ1+	0	4	25	34	20	14	3	2	0	0
Citation CJ2	27	23	1	0	0	0	0	0	0	0
Citation CJ2+	0	0	36	44	56	21	17	15	19	15
Citation CJ3	6	48	72	78	88	40	20	22	21	15
Citation CJ4	0	0	0	0	0	0	19	48	44	33
Citation XLS	32	64	73	82	72	7	0	0	0	0
Citation XLS+	0	0	0	0	8	37	22	27	31	31
Citation Sovereign	9	46	57	65	77	33	16	19	22	0
Sovereign+	0	0	0	0	0	0	0	0	0	13
Citation X	15	14	12	17	16	7	3	3	6	0
Caravan 675	13	11	8	11	12	12	8	10	11	11
Grand Caravan	51	75	59	68	89	85	87	83	96	94
Total	173	299	343	399	438	256	195	229	250	212

Total Wichita OEM Aircraft Shipments, Total General Aviation Shipments Manufactured in the U.S., and the Percentage of Those Shipments Manufactured in Wichita										
Model	2004	2005	2006	2007	2008	2009	2010	2011	2012	2013
Beechcraft	195	213	258	268	275	175	141	146	121	205
Bombardier Learjet	48	67	71	80	74	46	28	43	39	29
Cessna	173	299	343	399	438	256	195	229	250	212
OEM total	416	579	672	747	787	477	364	418	410	446
Total G.A. shipments manufactured in the U. S.	2,355	2,857	3,147	3,279	3,079	1,585	1,334	1,465	1,518	1,615
Wichita shipments as a percentage of U.S. total G.A. shipments	17.7%	20.3%	21.4%	22.8%	25.6%	30.1%	27.3%	28.5%	27.0%	27.6%

The charts and tables above illustrate the impact of the most recent recession on the general aviation manufacturing industry in Wichita. The three local OEMs had significant declines in aircraft shipments in 2009 through 2013, compared to pre-recession levels. Although Wichita's total OEM shipments have rebounded somewhat since 2010, they continue to be nearly 57 percent lower than the 2008 peak of 787 shipments. Because the total general aviation shipments manufactured in the United States also declined during the recession, Wichita's percentage share of those shipments in 2013 is only 2.5 percentage points lower than the 2009 peak of 30.1 percent and is 7.8 percentage points higher than the average percentage share in the pre-recession years of 2004 through 2006.

Some of the aircraft models included in this report are out of production, but have been included in order to more accurately reflect annual Wichita OEM shipment levels back through 2004. Also, other models, such as the Cessna Citation X+, have been certified and delivered, but too recently to be included in GAMA's general aviation shipment data.