

Inflation and Producer Prices

Midwest Region and United States

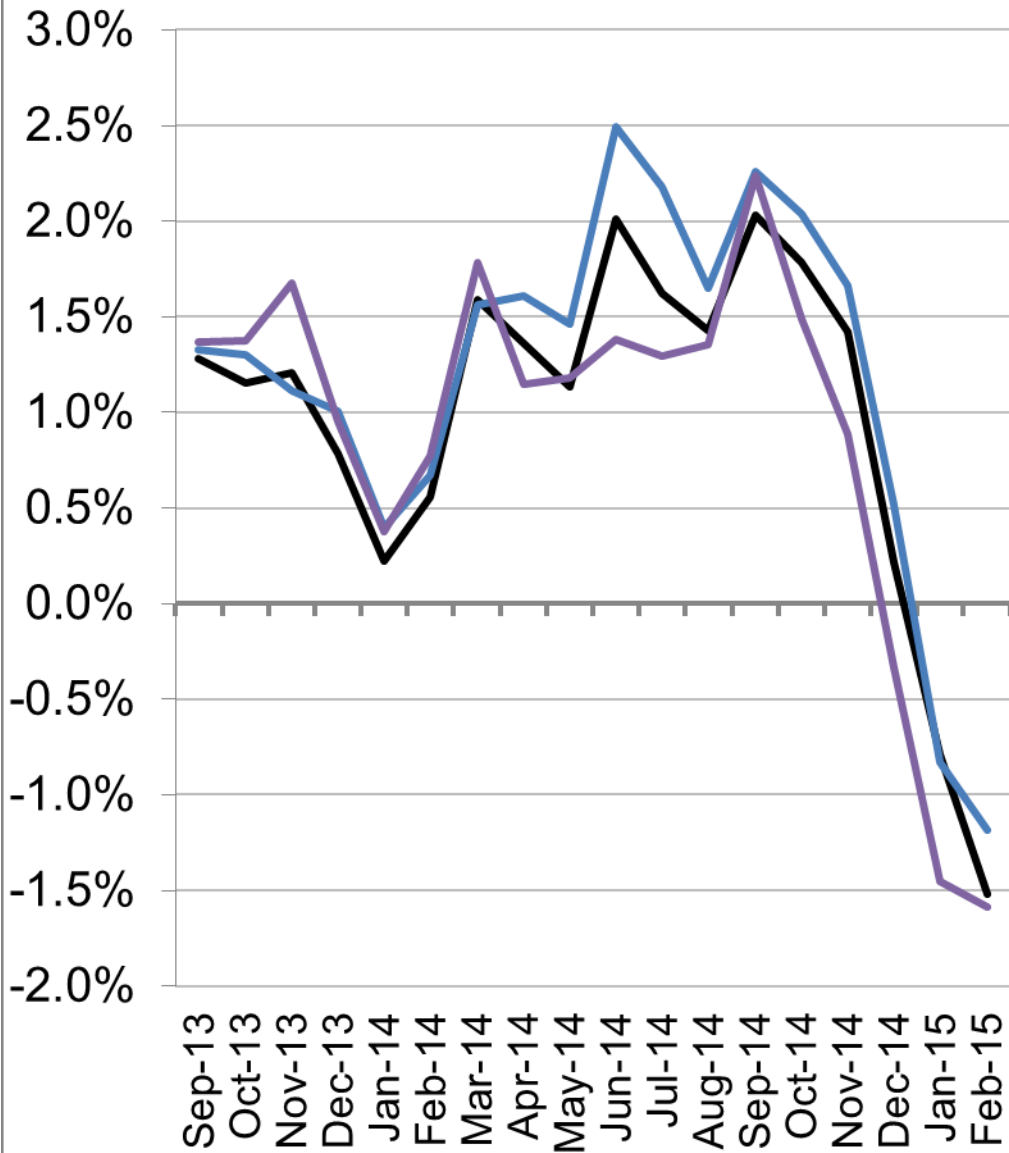
February, 2015



CEDBR

Center for Economic Development
and Business Research

Midwest Annual Inflation Rates



— Urban Metro Pop. > 1.5 Mil.
 Jan-15 Feb-15 Change

-0.79%	-1.52%	↓ -0.73%
--------	--------	----------

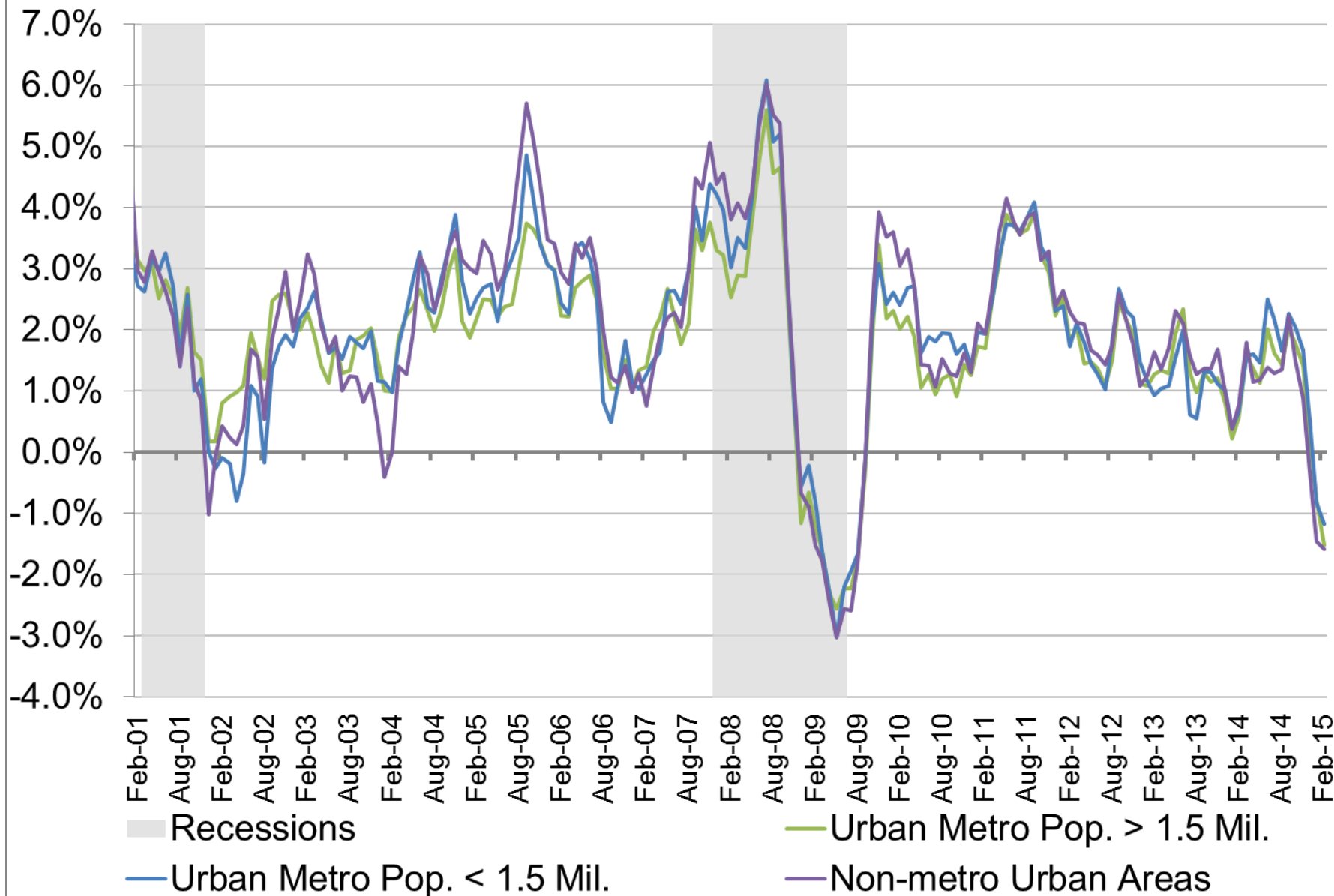
— Urban Metro Pop. < 1.5 Mil.
 Jan-15 Feb-15 Change

-0.83%	-1.18%	↓ -0.35%
--------	--------	----------

— Non-metro Urban Areas
 Jan-15 Feb-15 Change

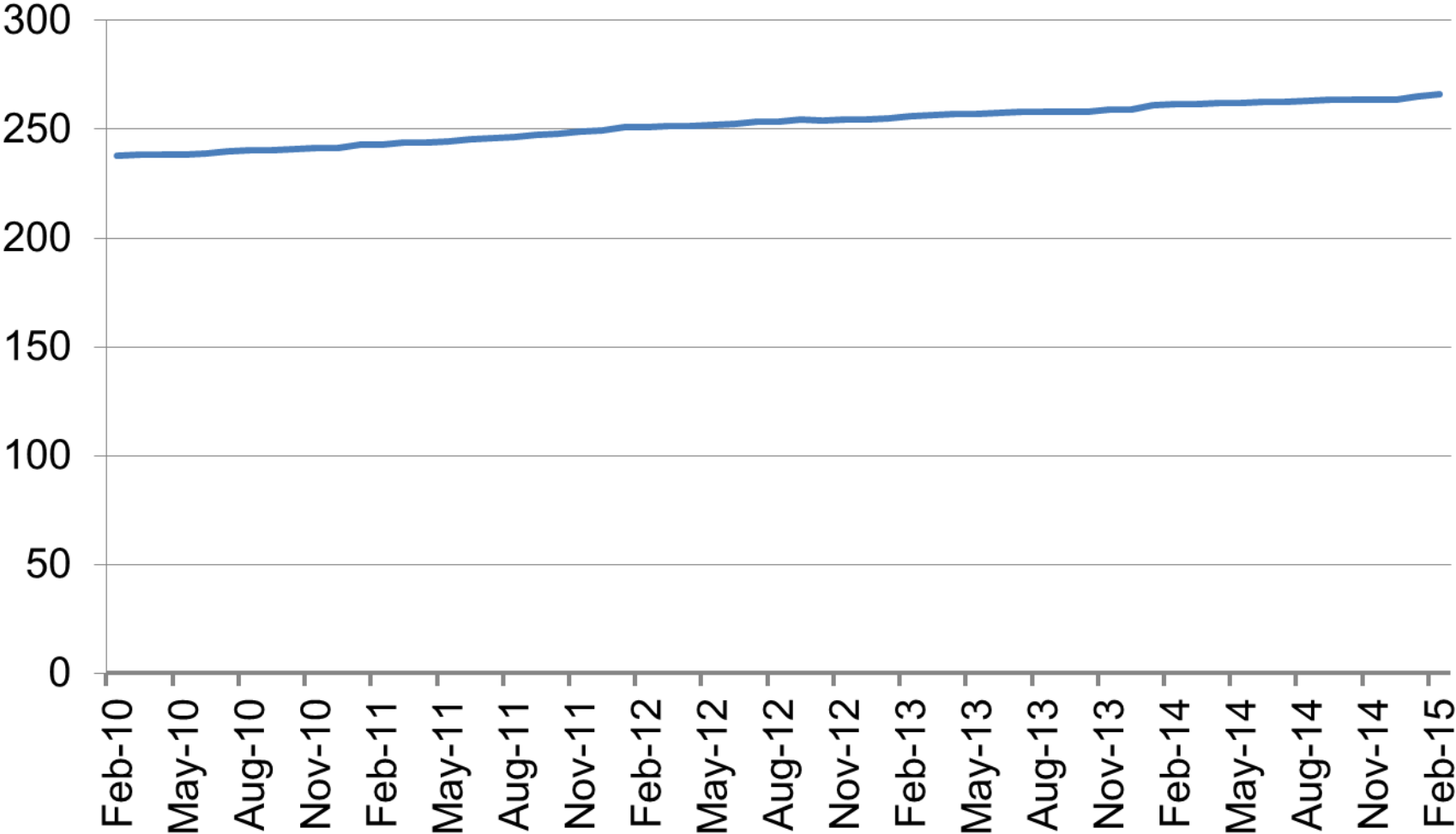
-1.45%	-1.59%	↓ -0.14%
--------	--------	----------

Midwest Annual Inflation Rates



Source: Bureau of Labor Statistics

Producer Price Index - Aircraft



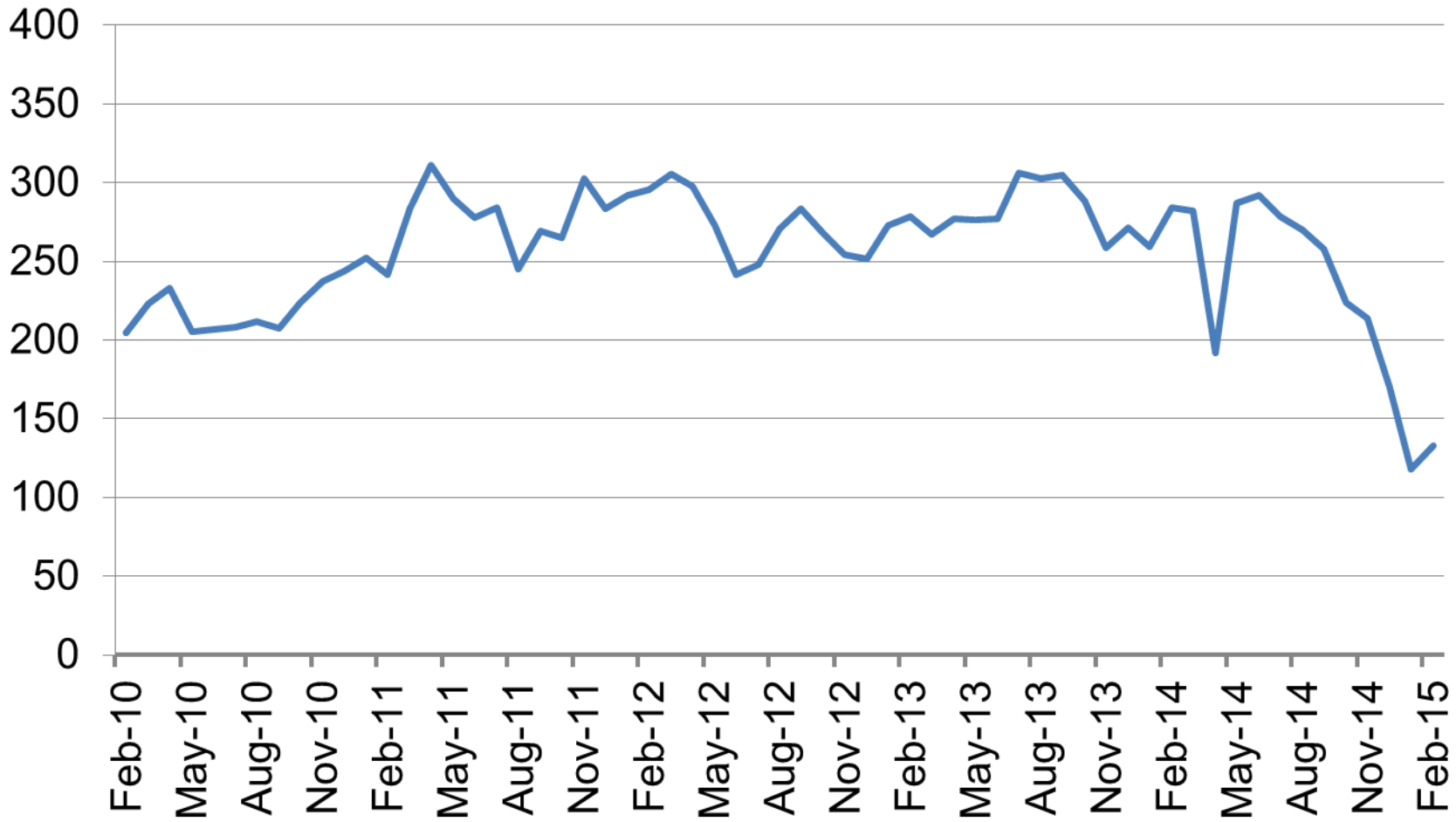
— Aircraft and Aircraft Equipment

% Change in Price

Feb-14 to Feb-15 ↑ 1.7%
 Jan-15 to Feb-15 ↑ 0.2%

Source: Bureau of Labor Statistics

Producer Price Index - Crude Petroleum

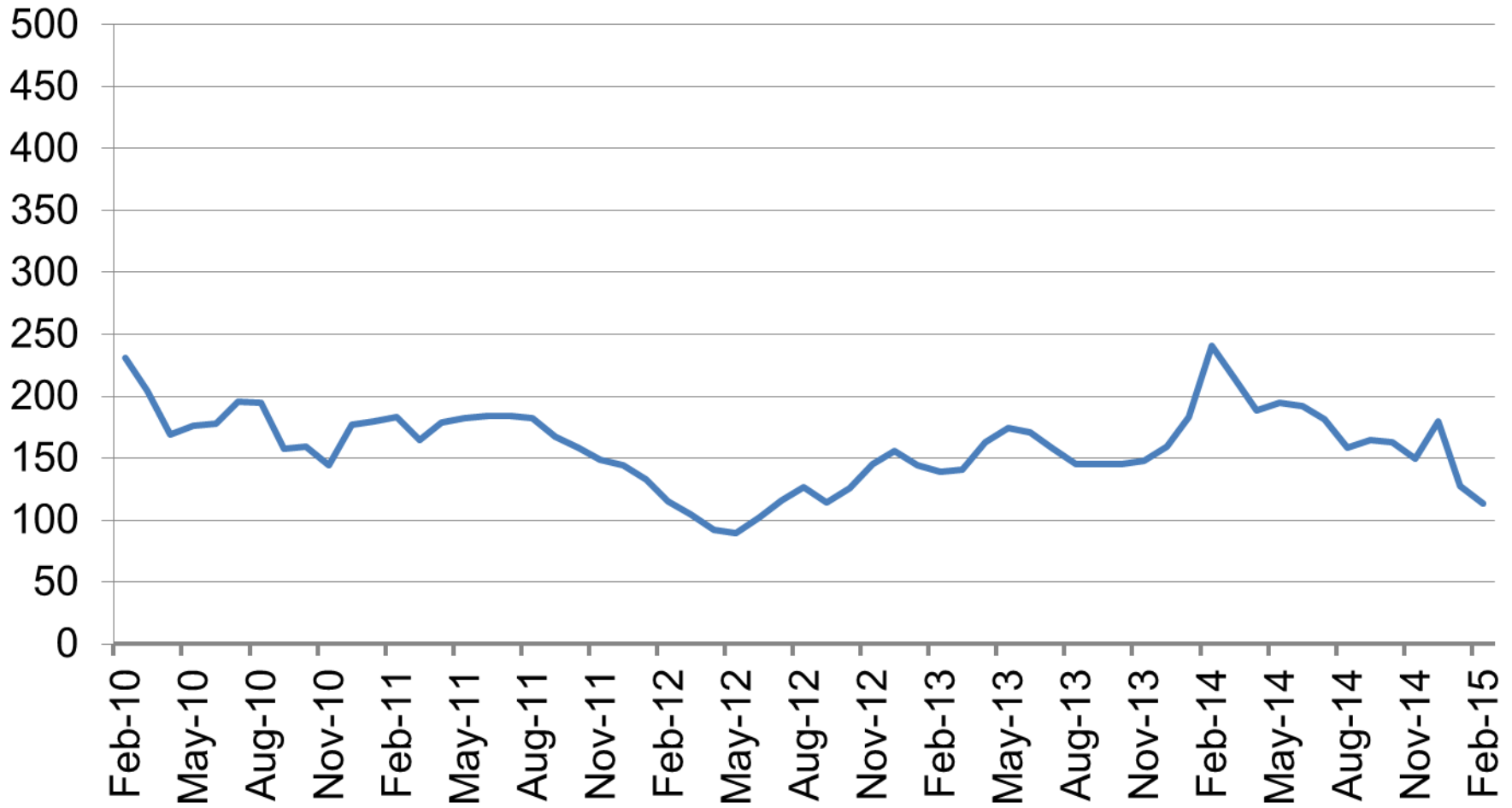


— Crude Petroleum (domestic production)

% Change in Price
Feb-14 to Feb-15 ↓ -53.4%
Jan-15 to Feb-15 ↑ 12.3%

Source: Bureau of Labor Statistics

Producer Price Index - Natural Gas



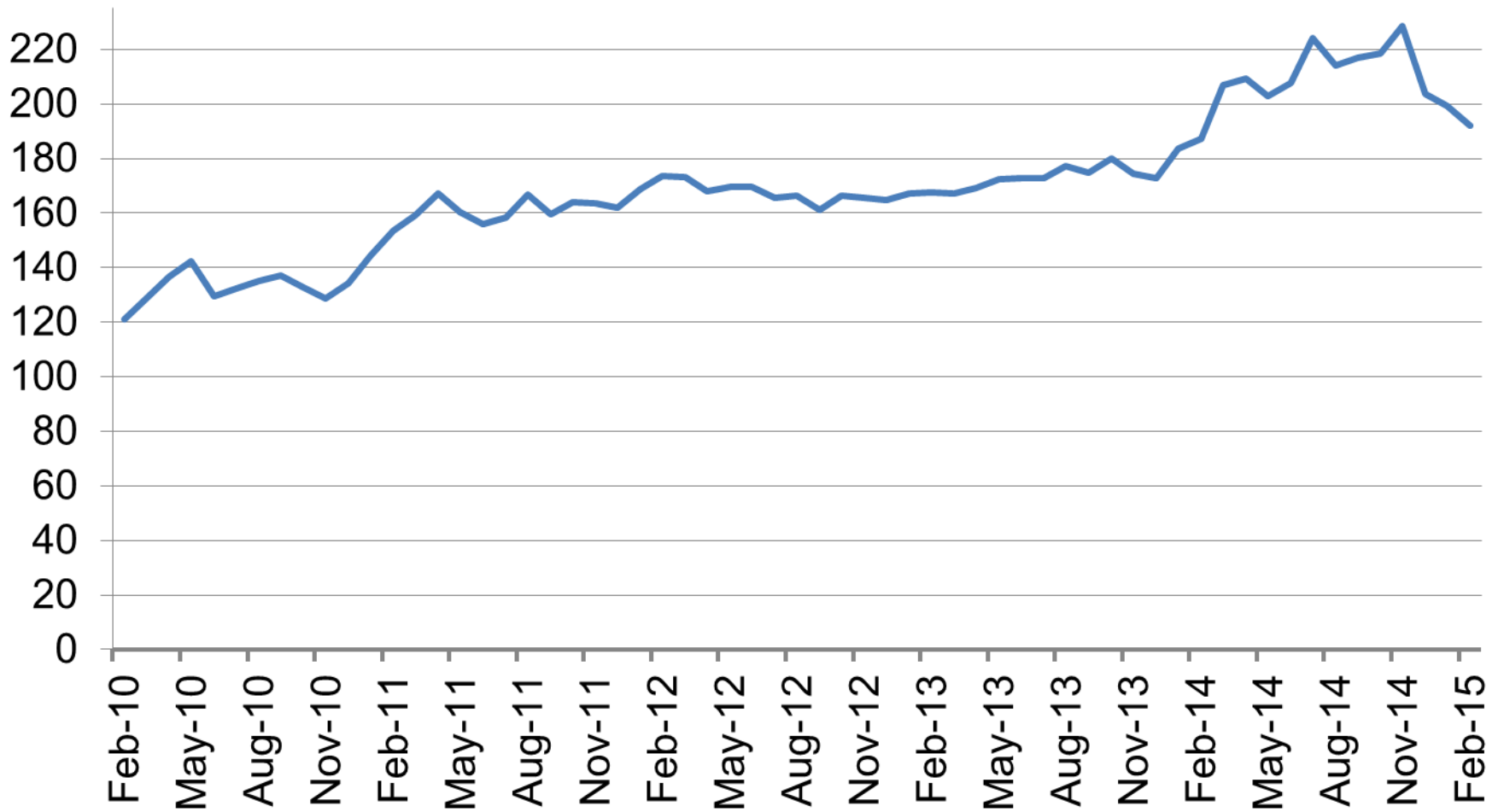
— Natural Gas

% Change in Price

Feb-14 to Feb-15 ↓ -52.8%

Jan-15 to Feb-15 ↓ -11.2%

Producer Price Index - Slaughter Livestock



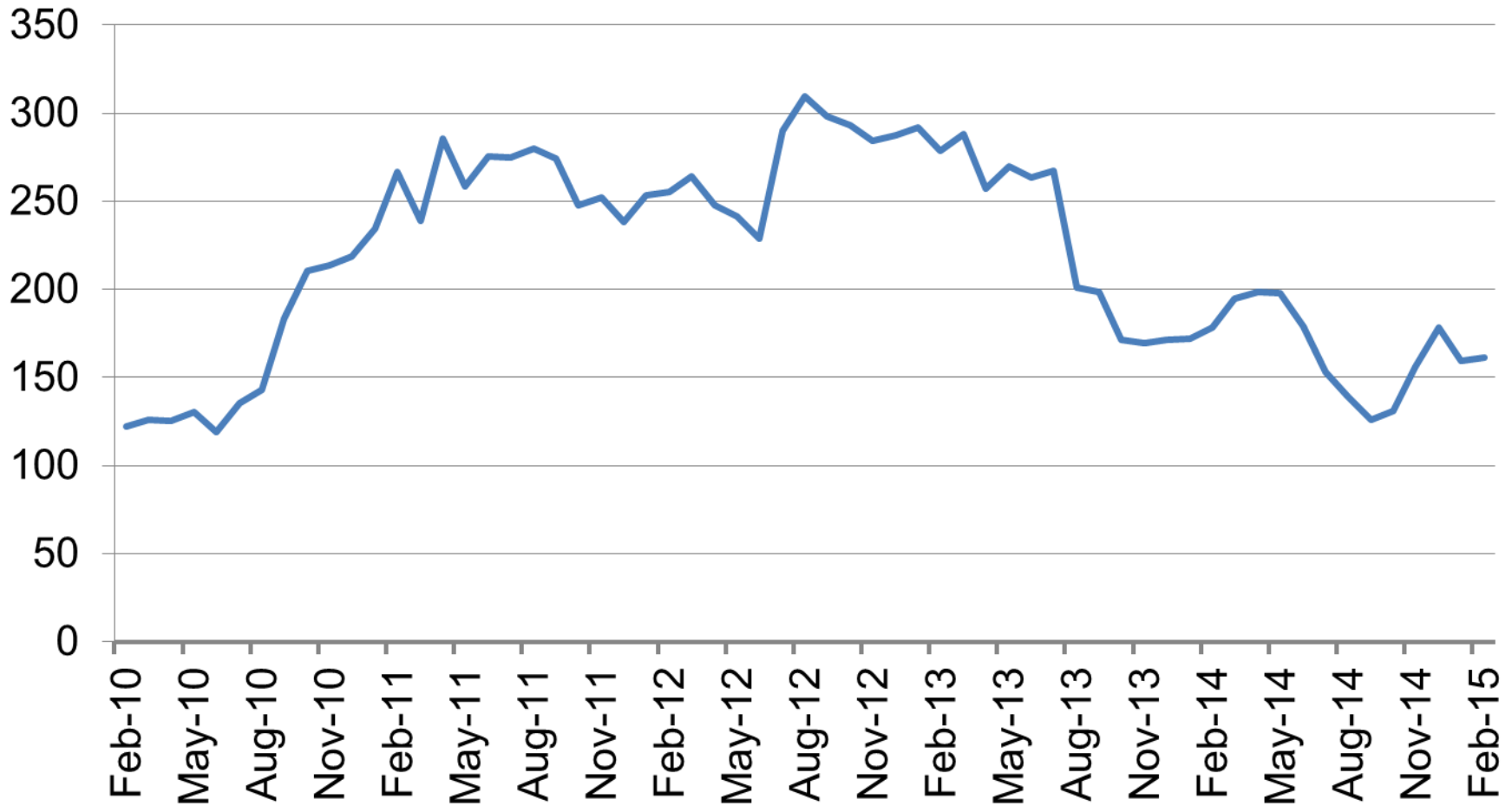
— Slaughter Livestock

% Change in Price

Feb-14 to Feb-15 ↑ 2.7%

Jan-15 to Feb-15 ↓ -3.5%

Producer Price Index - Sorghum



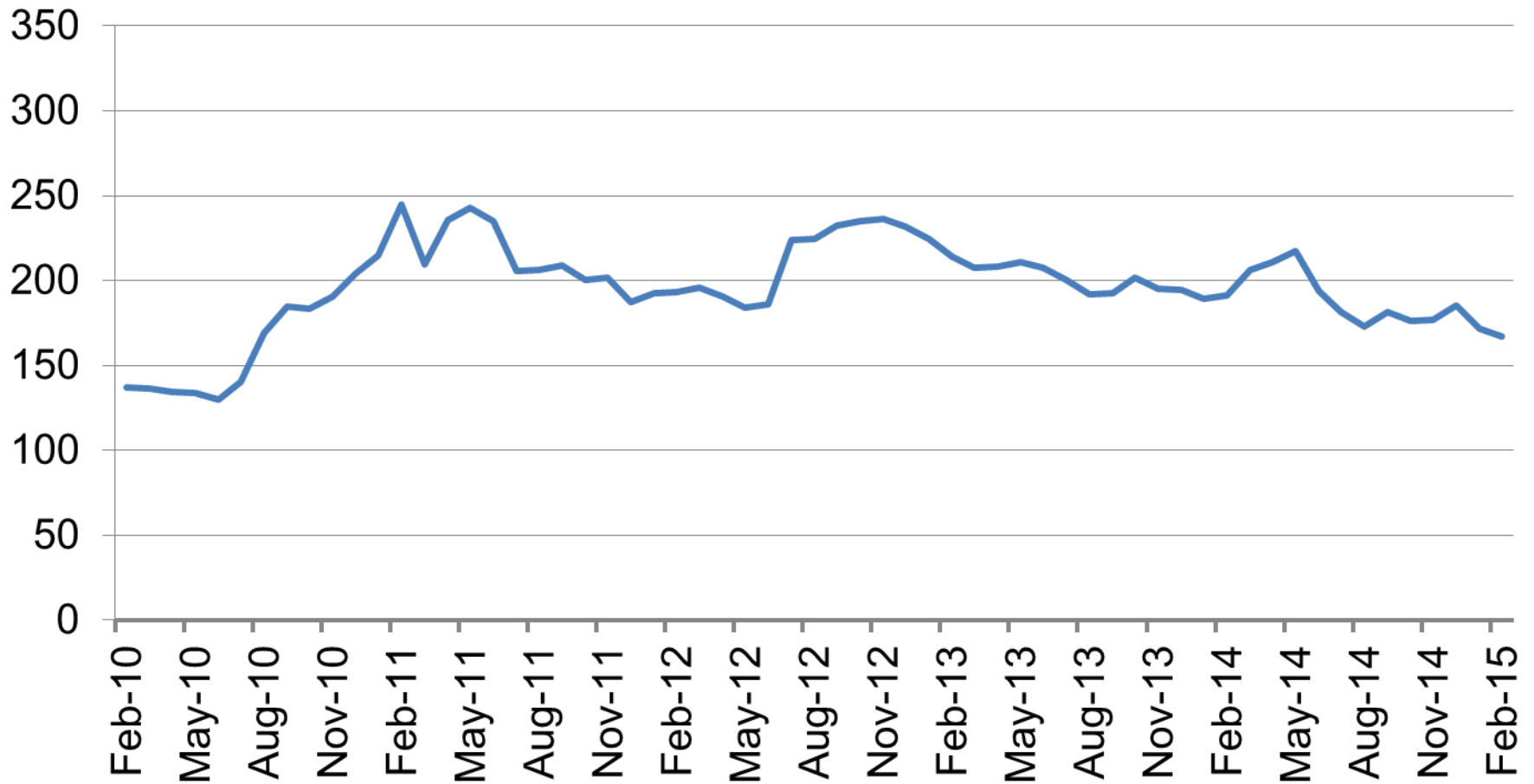
— Sorghum

% Change in Price

Feb-14 to Feb-15 ↓ -9.7%

Jan-15 to Feb-15 ↑ 1.1%

Producer Price Index - Wheat



— Wheat

% Change in Price

Feb-14 to Feb-15 ↓ -12.6%

Jan-15 to Feb-15 ↓ -2.7%

Data Definitions

- **Consumer Price Index (CPI):** The CPI is used to calculate the annual inflation rate. The CPI is a measure of the average change over time in the prices paid by urban consumers for a market basket of consumer goods and services.
- **Midwest Region:** The Midwest region consists of North Dakota, South Dakota, Nebraska, Kansas, Minnesota, Iowa, Missouri, Wisconsin, Illinois, Michigan, Indiana, and Ohio
- **Producer Price Index (PPI):** The PPI is a family of indexes that measures the average change over time in the selling prices received by domestic producers of goods and services. PPIs measure price change from the perspective of the seller.

Thank You

For additional information you may contact us

at: (316) 978-3225

or

cedbr@wichita.edu



CEDBR

Center for Economic Development
and Business Research