

Hays Economic Outlook Conference – Agriculture

Dr. John Greathouse, Chair

FHSU Department of Agriculture

Interest Rates



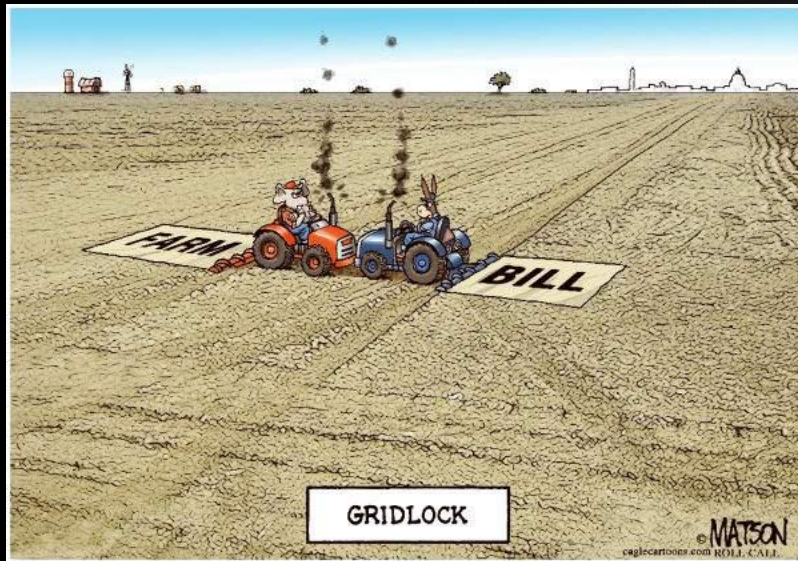
High flying risks



2012 Presidential Election



National Food and Ag Policy



America's Farm Bill 2008

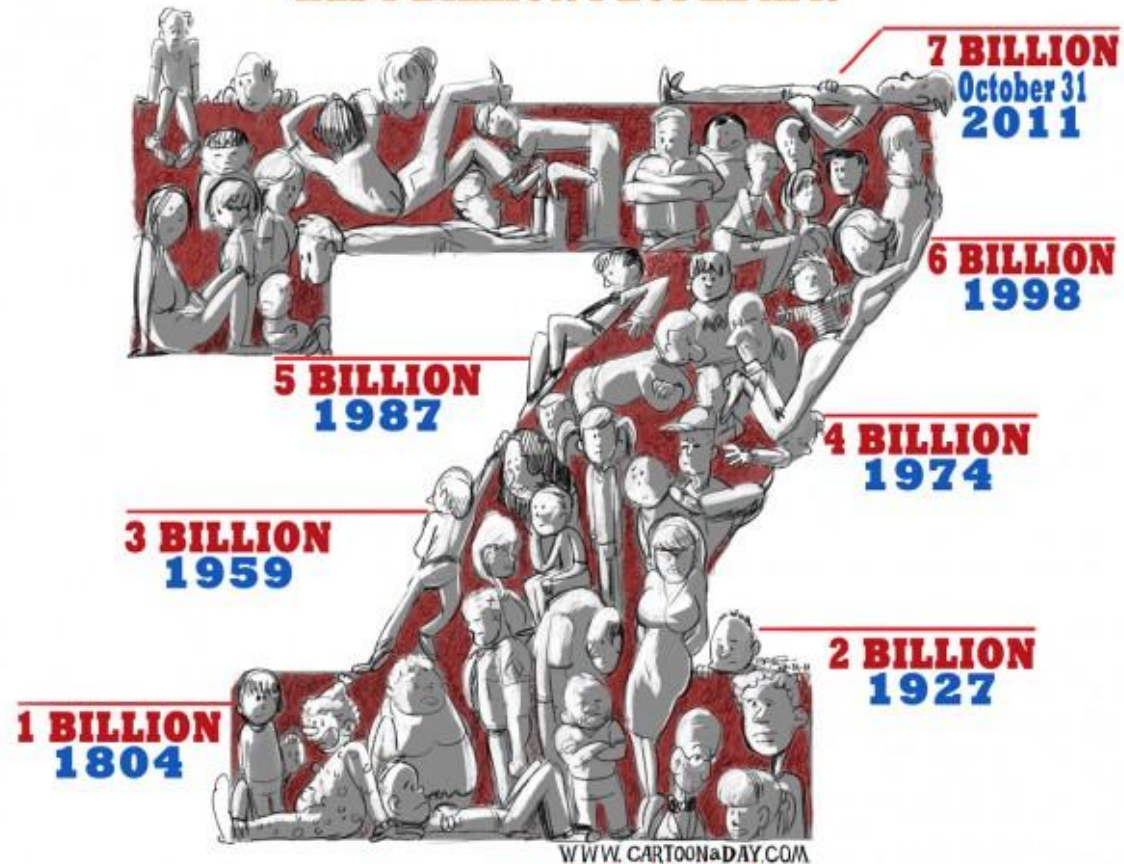


World Population

Welcome to Earth
Population
7,000,000,000



**As of RIGHT NOW, the world you live in today
has 7 BILLION PEOPLE in it**



WWW.CARTOONADAY.COM

...where do YOU fit in?



Earth at Night
More information available at:
<http://antwrp.gsfc.nasa.gov/apod/ap001127.html>

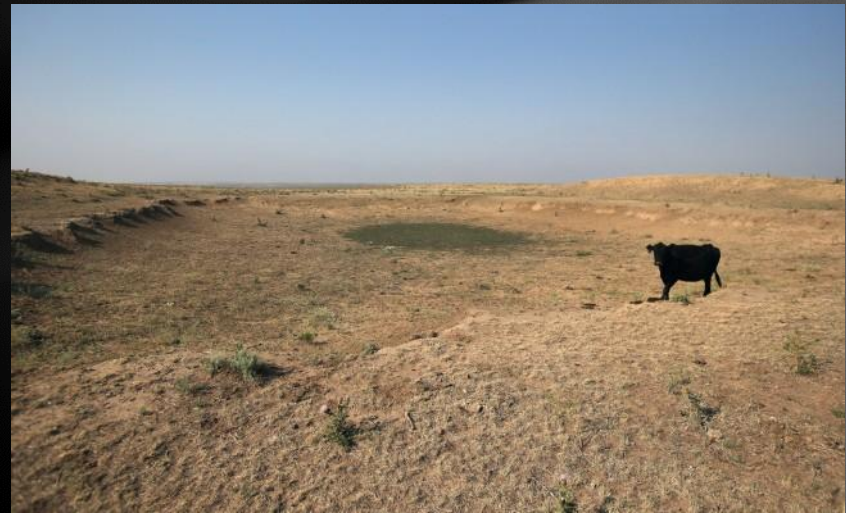
Astronomy Picture of the Day
2000 November 27
<http://antwrp.gsfc.nasa.gov/apod/astropix.html>

Agriculture's Challenge.....



Regional Economic Issues

Drought



U.S. Drought Monitor

October 9, 2012

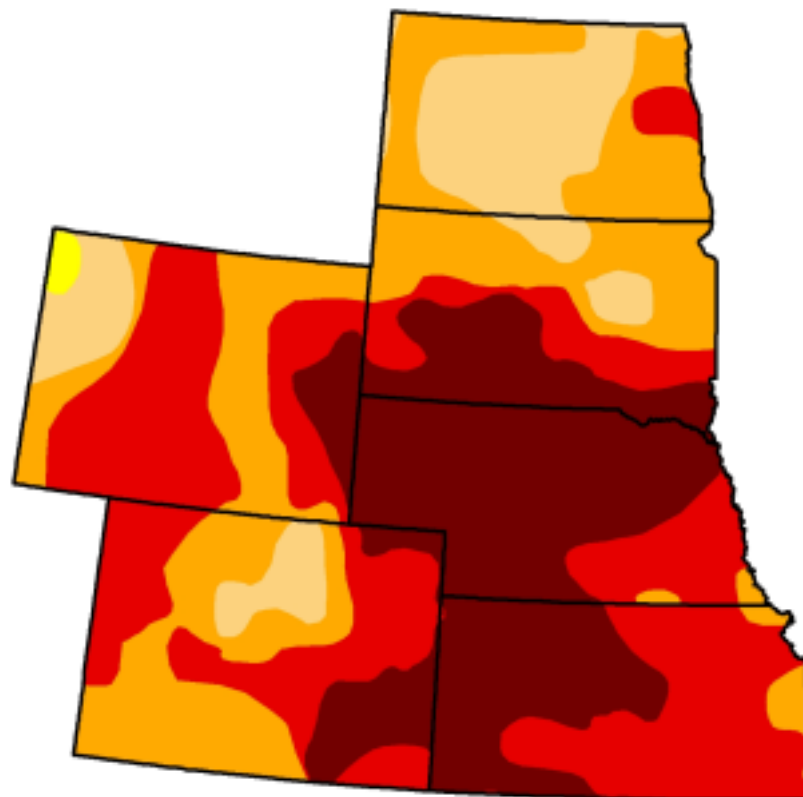
Valid 7 a.m. EST

High Plains

Drought Conditions (Percent Area)

	None	D0-D4	D1-D4	D2-D4	D3-D4	D4
Current	0.00	100.00	99.61	87.58	60.82	28.24
Last Week (10/02/2012 map)	0.00	100.00	99.62	87.51	60.70	27.91
3 Months Ago (07/10/2012 map)	6.14	93.86	83.93	55.59	21.85	1.13
Start of Calendar Year (12/27/2011 map)	61.66	38.34	18.12	7.22	2.07	0.04
Start of Water Year (09/25/2012 map)	0.00	100.00	98.91	83.80	61.28	24.35
One Year Ago (10/04/2011 map)	63.37	36.63	19.18	12.80	6.92	2.97

Intensity:



The Drought Monitor focuses on broad-scale conditions. Local conditions may vary. See accompanying text summary for forecast statements.

<http://droughtmonitor.unl.edu>



Released Thursday, October 11, 2012
Matthew Rosencrans, NOAA/NWS/NCEP/CPC

Regional Economic Issues

Dwindling feed/food supplies



Regional Economic Issues

Dwindling feed/food supplies

Limited/restricted water



Regional Economic Issues

Dwindling feed/food supplies

Limited/restricted water

Reduced livestock herd inventories

Hays Feeders to close after Jan. 1

Tuesday, October 16, 2012 5:53 AM

By TIM UNRUH Salina Journal

HAYS - If you notice less dust on the parched horizon from now through the holidays, fewer critters might be the reason.

Hays Feeders, a cattle feedyard seven and a half miles northwest of Hays, is closing when the last of the animals are.....

Regional Economic Issues

Dwindling feed/food supplies

Limited/restricted water

Reduced livestock herd inventories

Consistent/qualified laborers



Regional Economic Issues

Input costs

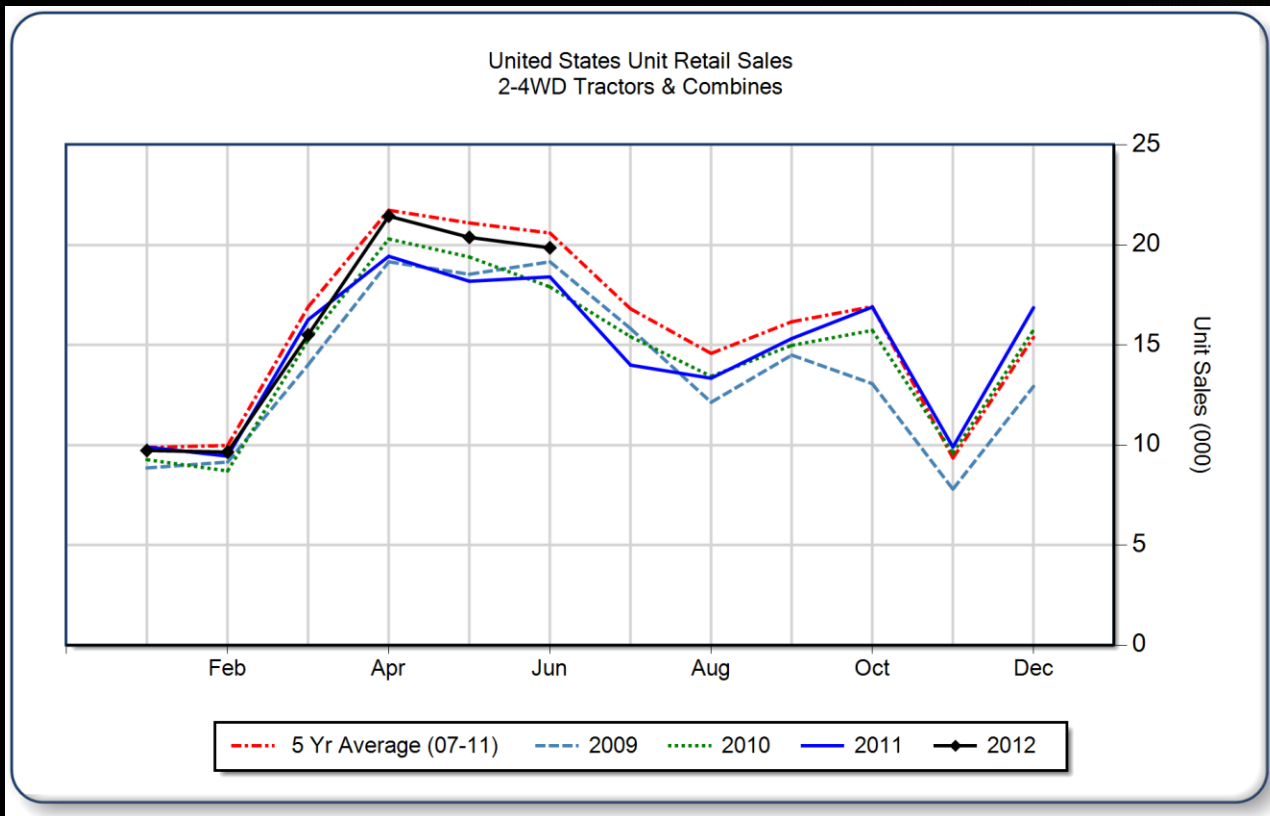
- Fertilizer
- Fuel
- Seed
- Feed
- Supplies
- Equipment

Gasoline	
Regular	395 $\frac{9}{10}$
Plus	405 $\frac{9}{10}$
V-Power [®]	415 $\frac{9}{10}$
Diesel #2	419 $\frac{9}{10}$



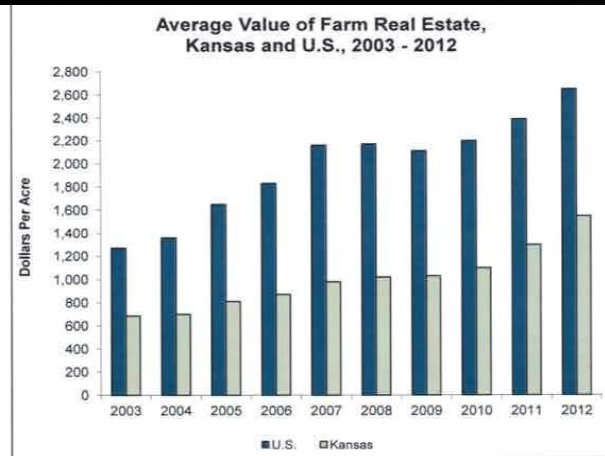
Regional Economic Issues

Input costs - Equipment



Regional Economic Issues

Land value



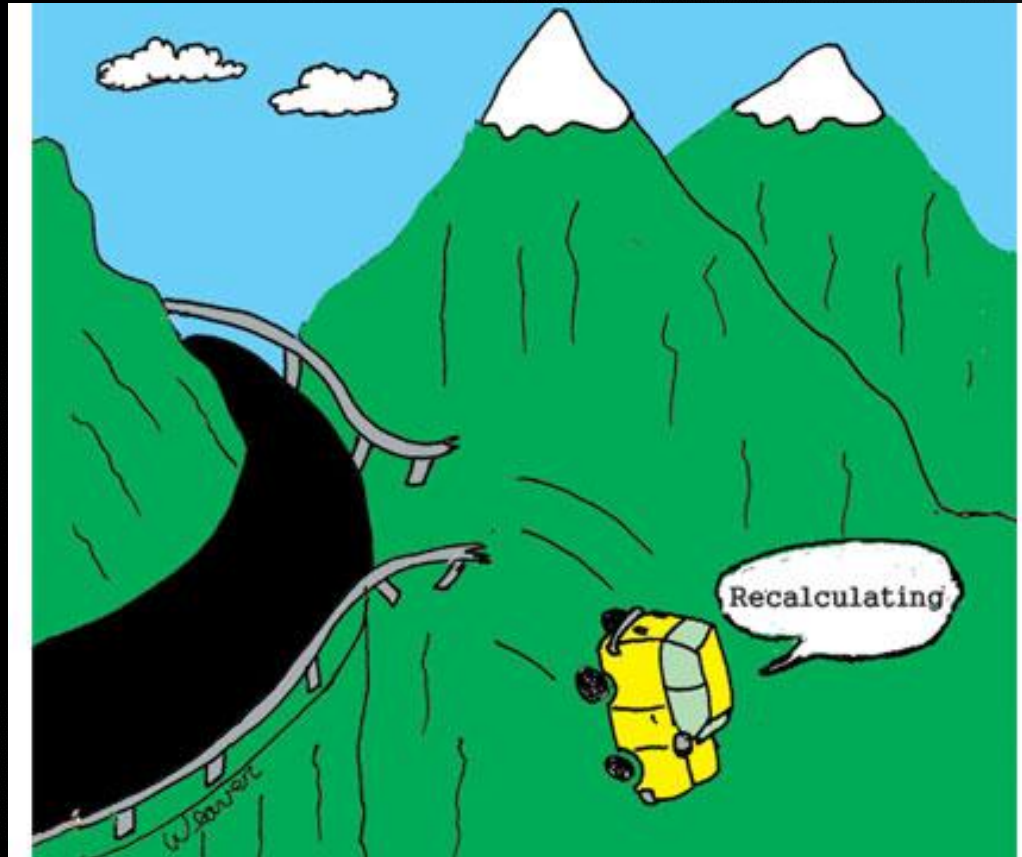
Robert White and Sherri Hand
Agricultural Statisticians

USDA is an equal opportunity provider and employer.

Jason Lamprecht
Acting Director



So, where are we going?



---PROJECTIONS----

