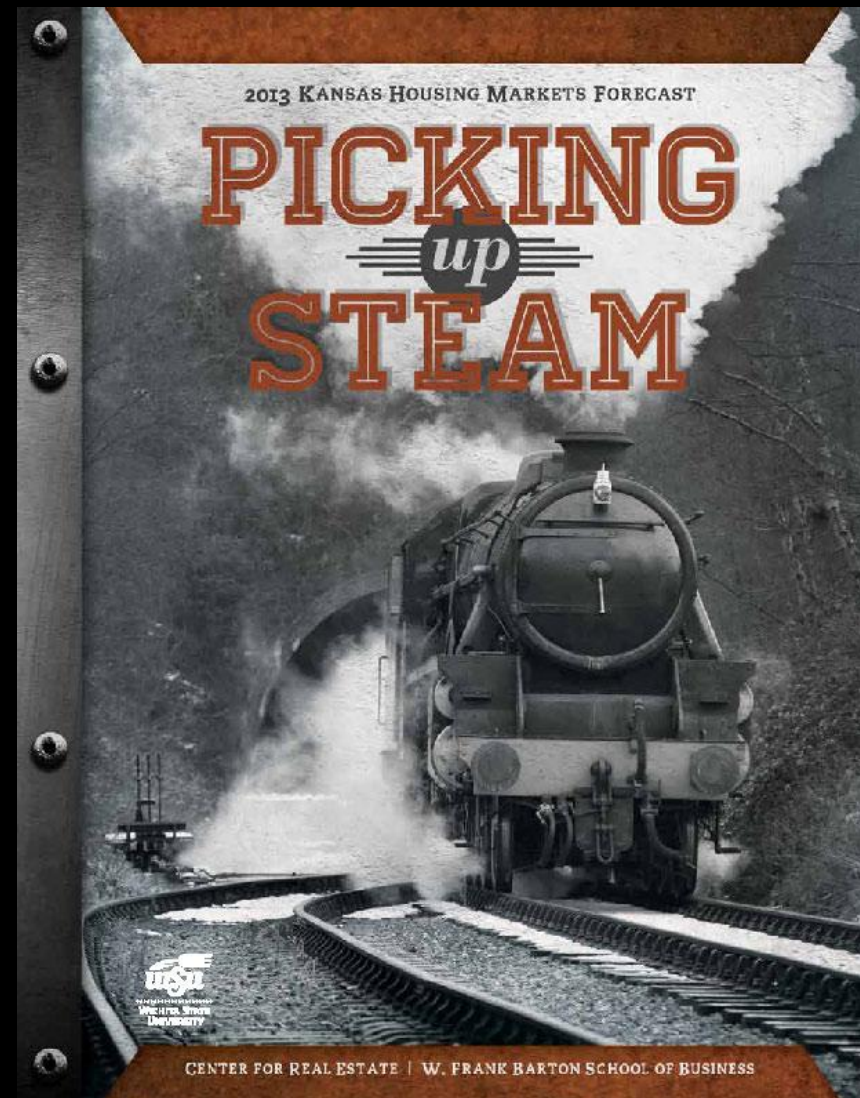


2013 Kansas Housing Markets Forecast

Pittsburg Economic
Outlook Conference

October 15, 2012

Dr. Stanley D. Longhofer
WSU Center for Real Estate



WICHITA STATE
UNIVERSITY

W. FRANK BARTON
SCHOOL OF BUSINESS



Special thanks to...



Security 1st Title

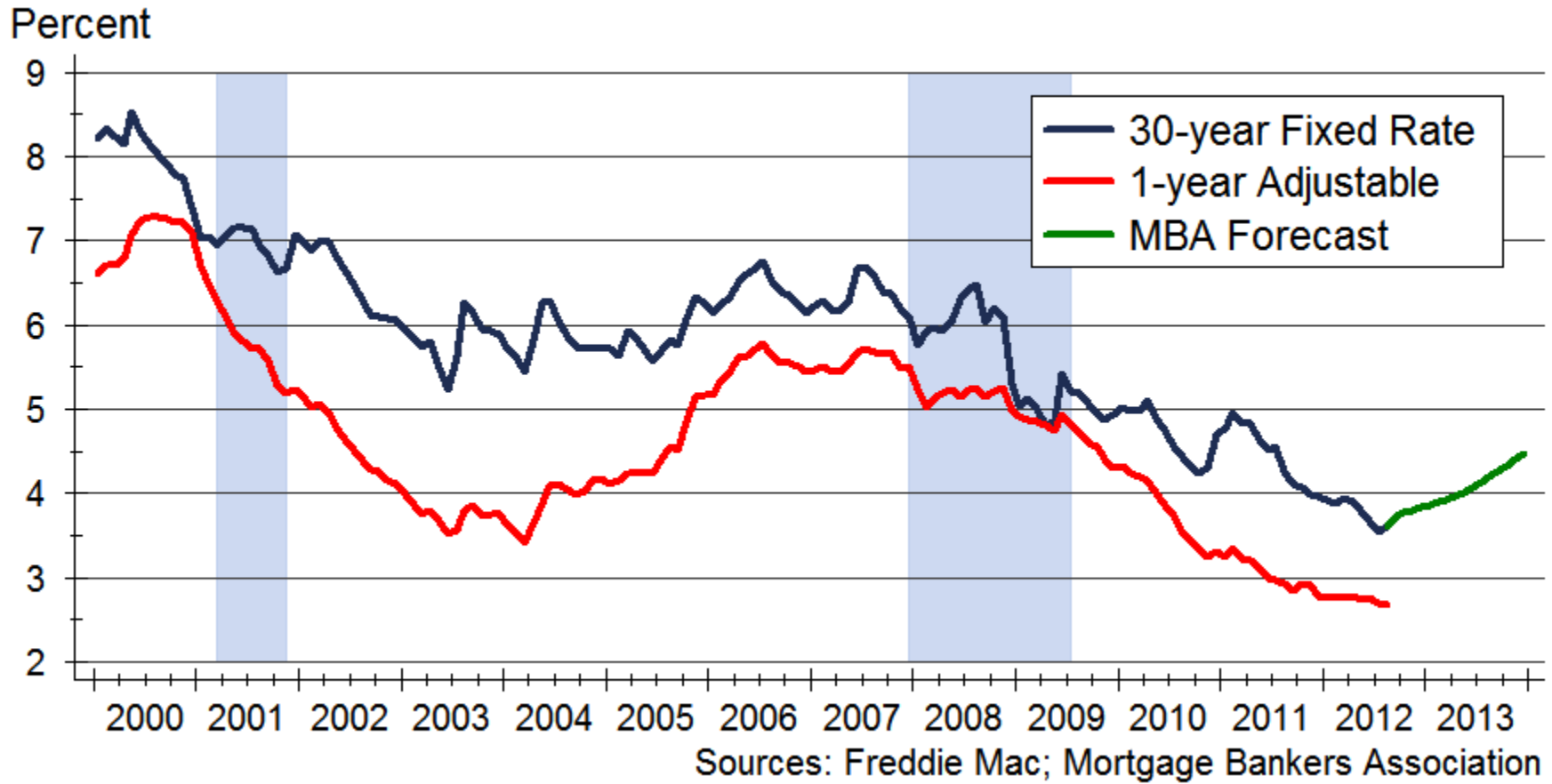
*for underwriting the cost of producing the
2013 Kansas Housing Markets Forecast*

Thanks also to...



**Pittsburg Board
of Realtors, Inc.**

Mortgage Rates

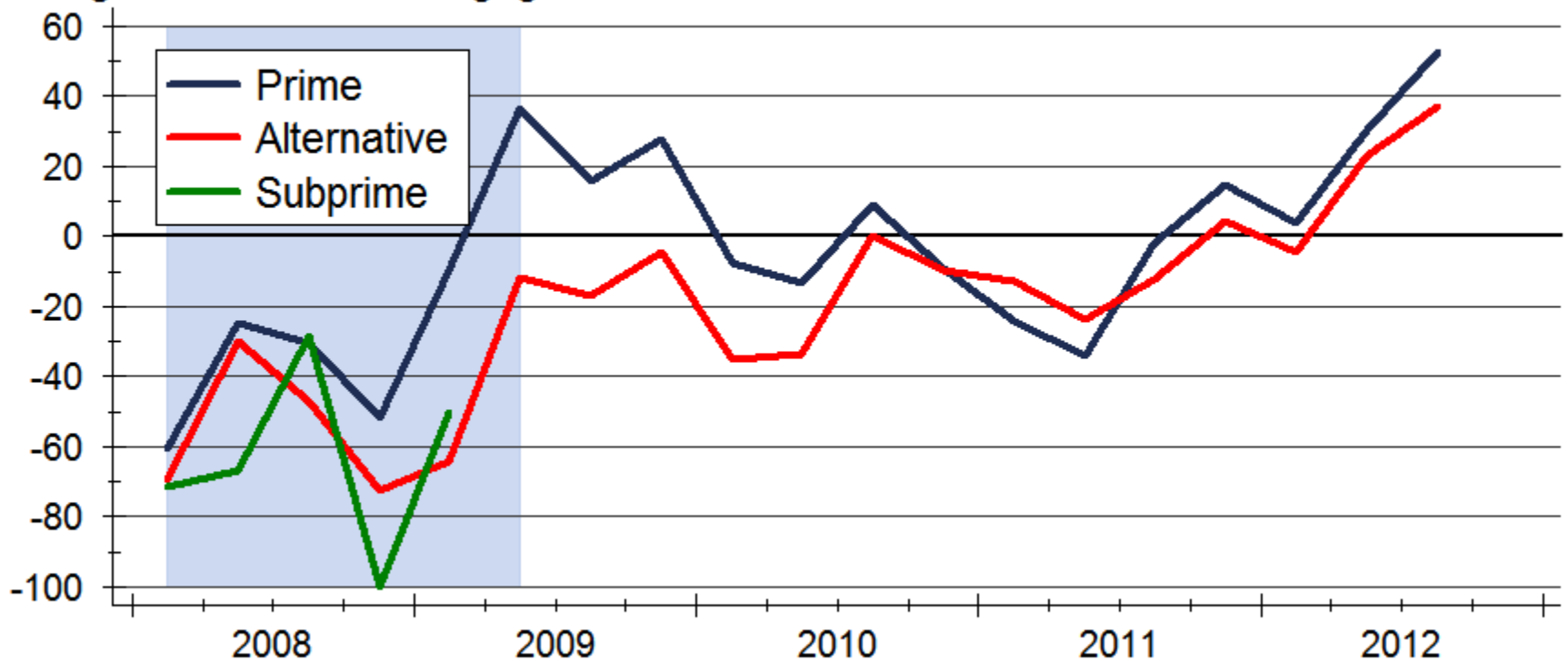


Mortgage Rates *Will* Rise

- The Federal Reserve is keeping mortgage rates artificially low through direct purchases of mortgage backed securities
 - This cannot continue forever, but when it will end is an open question
- Underwriting and regulatory restrictions continue to constrain mortgage markets

Mortgage Demand

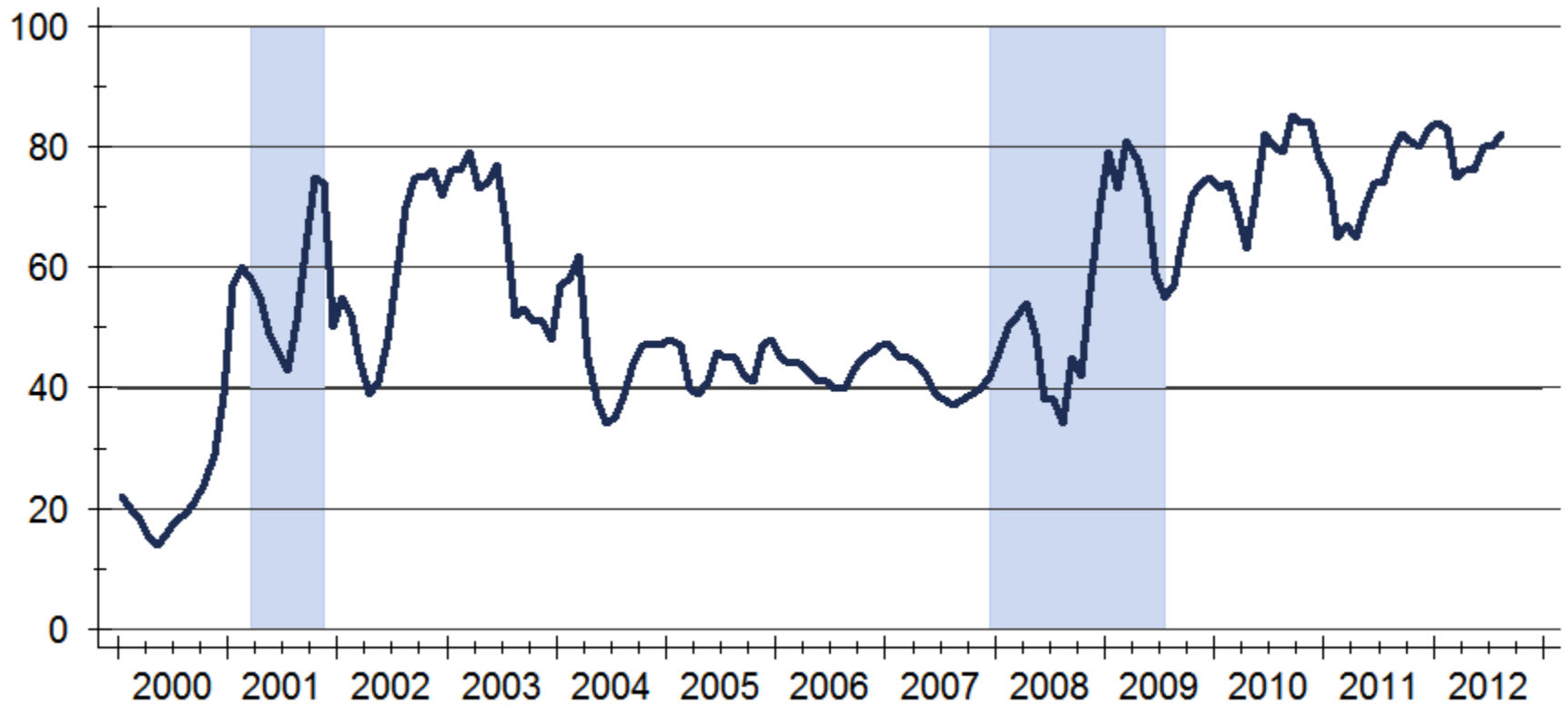
Net Percentage of Banks Reporting Stronger Demand for Mortgages



Source: Board of Governors of the Federal Reserve System

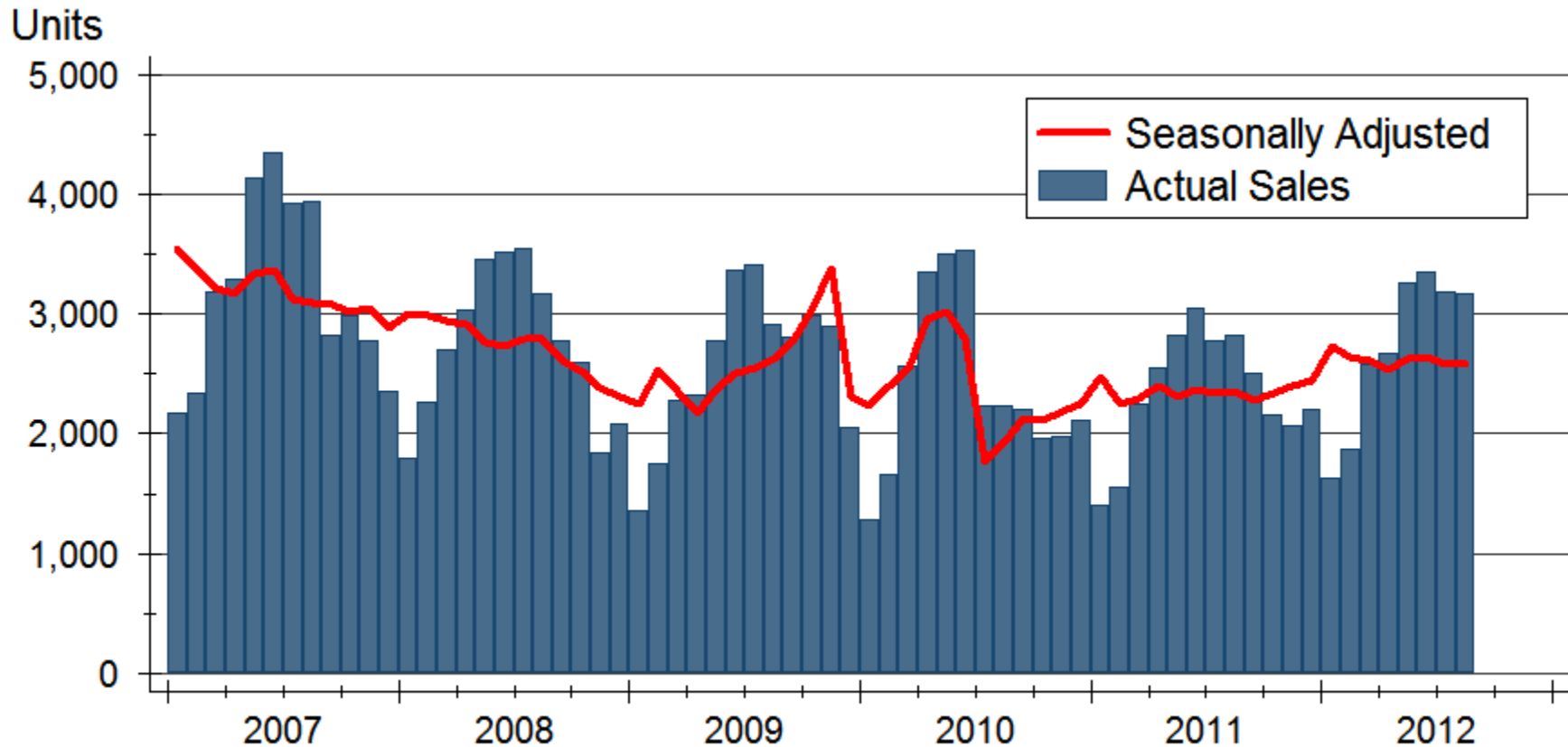
Mortgage Refinancing Activity

Refinance Share



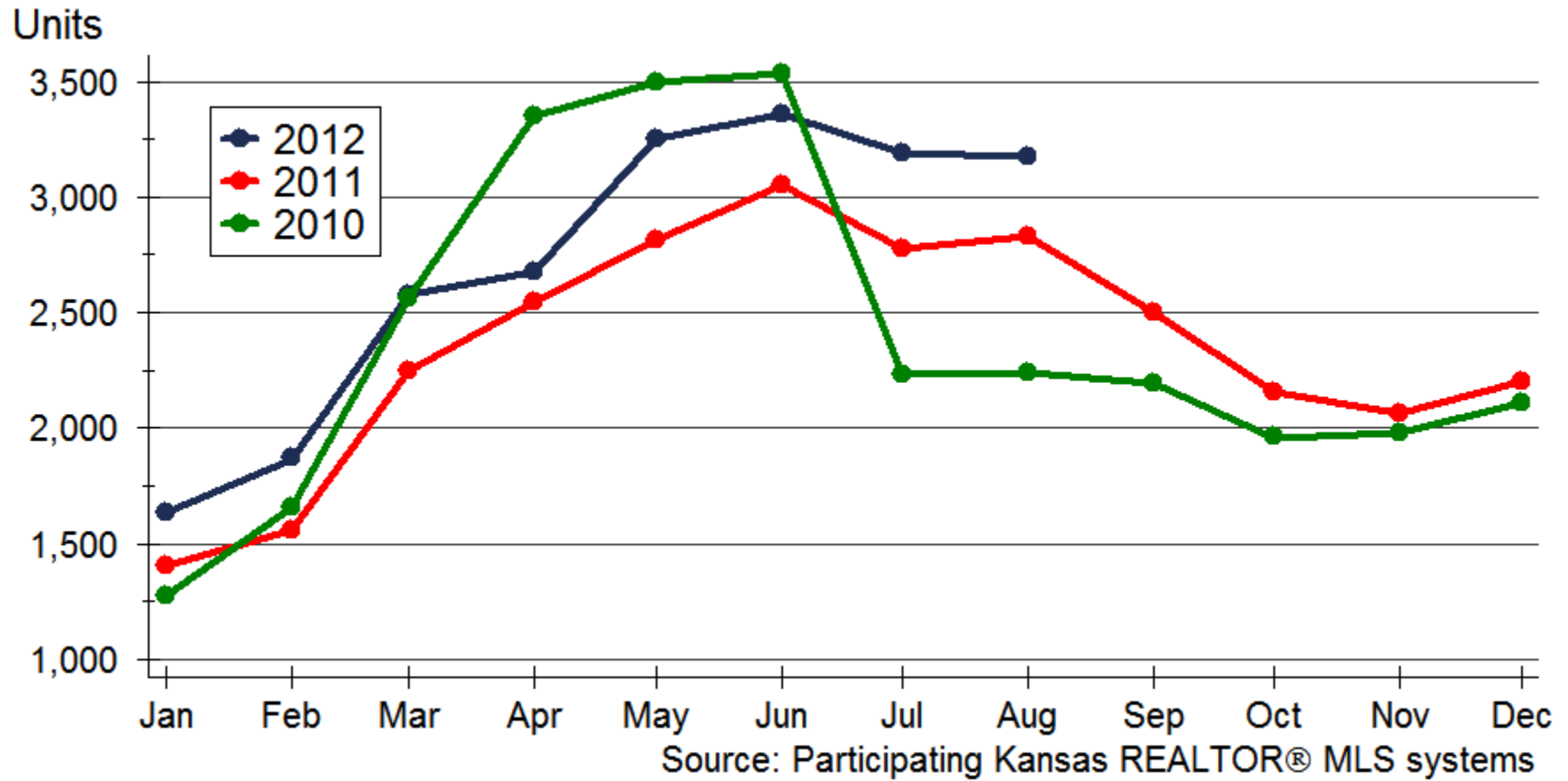
Source: Freddie Mac

Kansas Home Sales



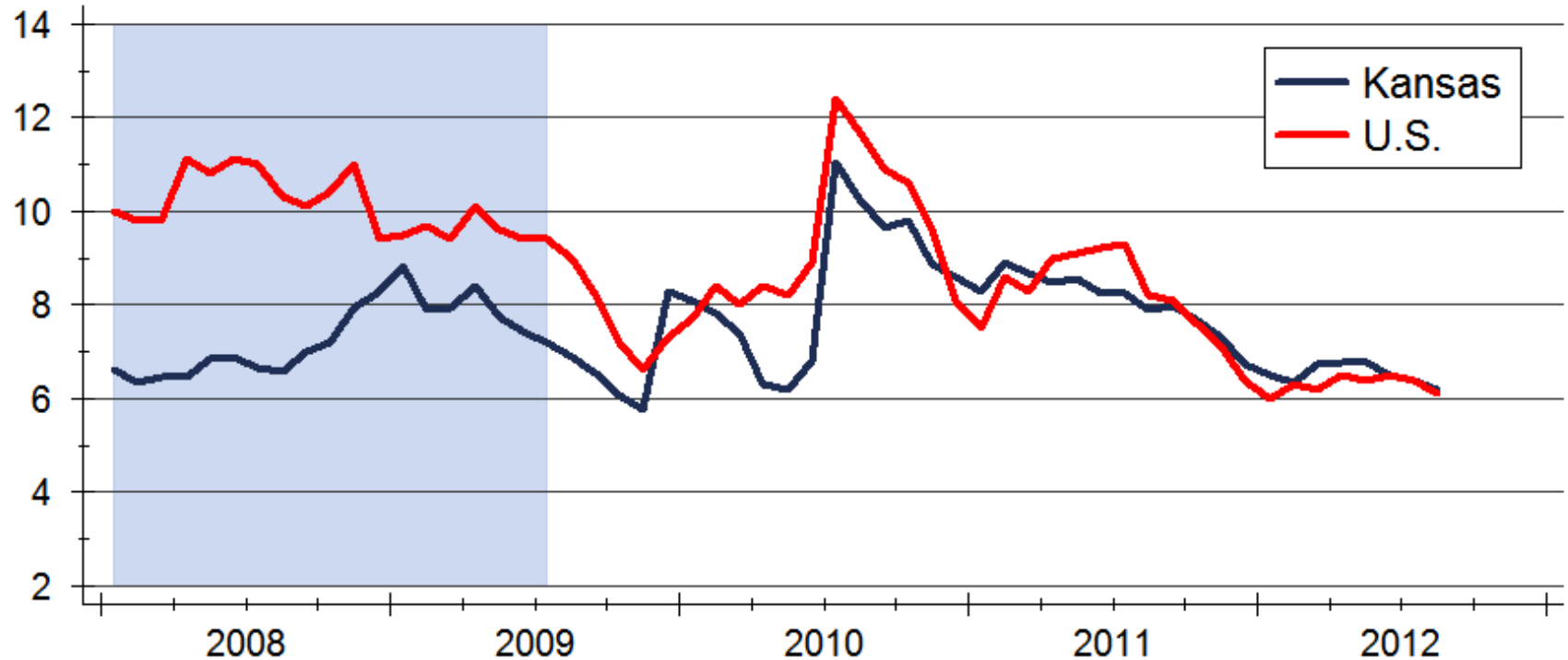
Source: Participating Kansas REALTOR® MLS systems

Kansas Home Sales



Inventories of Homes for Sale

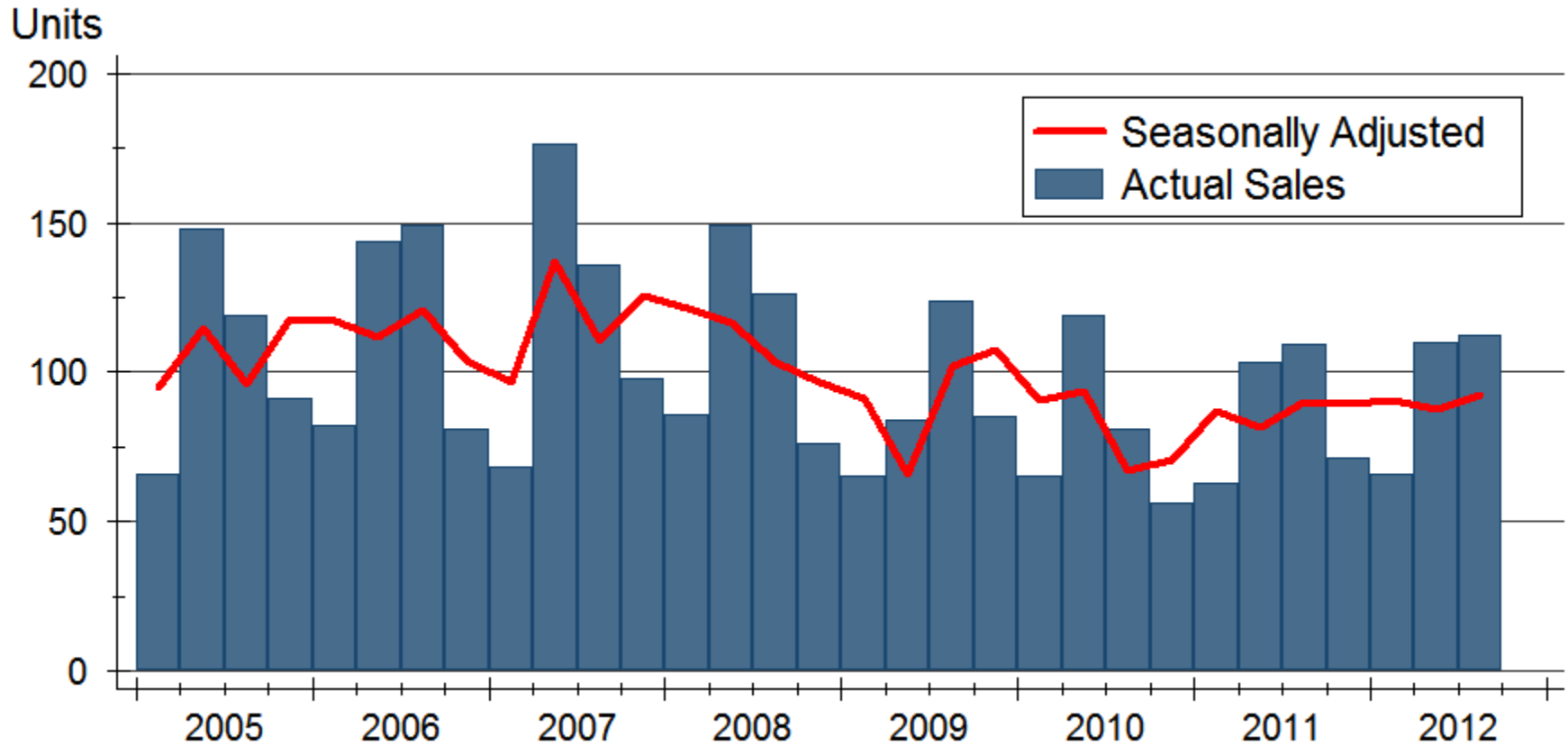
Months' Supply



Source: NAR and participating Kansas REALTOR® MLS systems

Data are seasonally adjusted

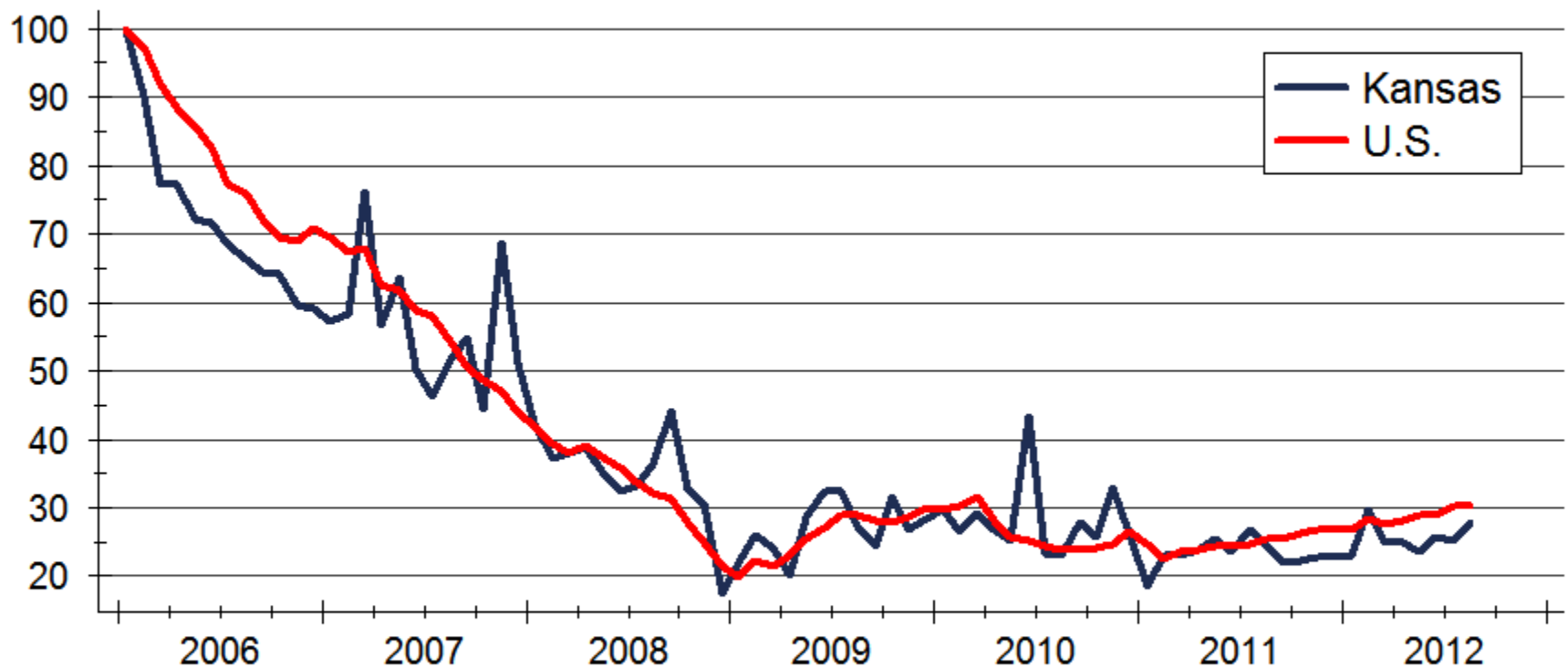
Pittsburg Home Sales



Source: Pittsburg Board of REALTORS®

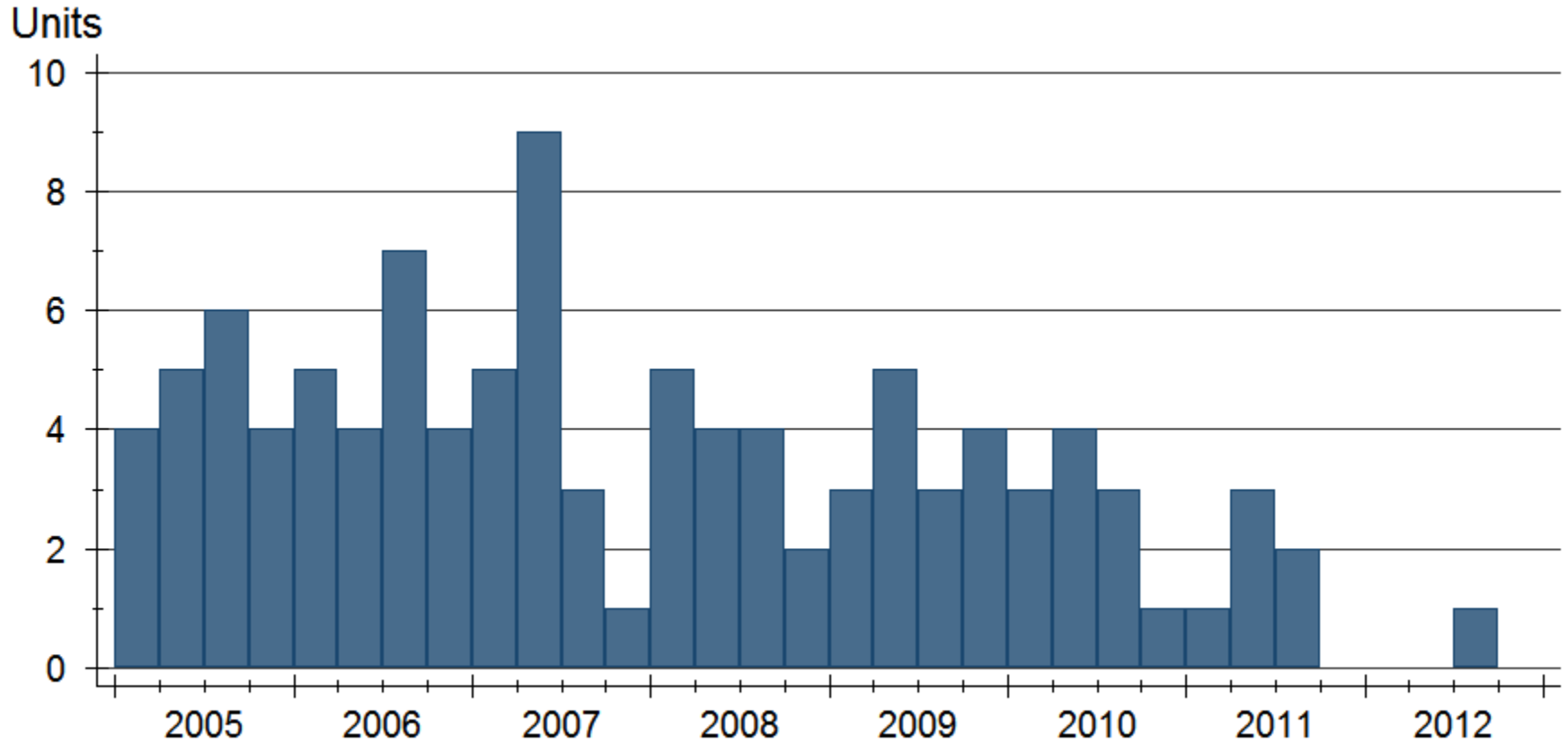
New Home Construction

Index: 2006m1 = 100



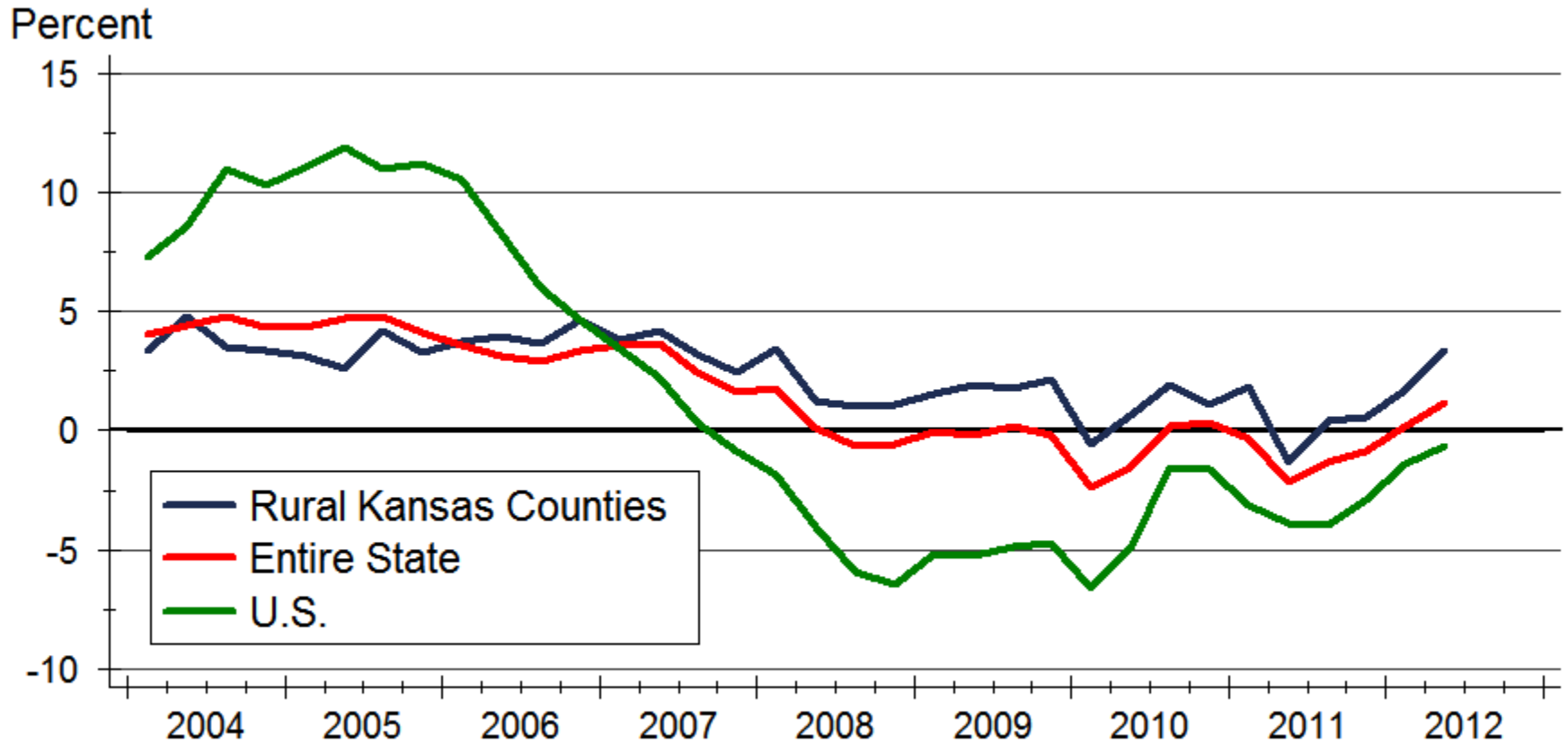
Source: U.S. Bureau of the Census
Data are seasonally adjusted annual rates

Pittsburg New Home Sales



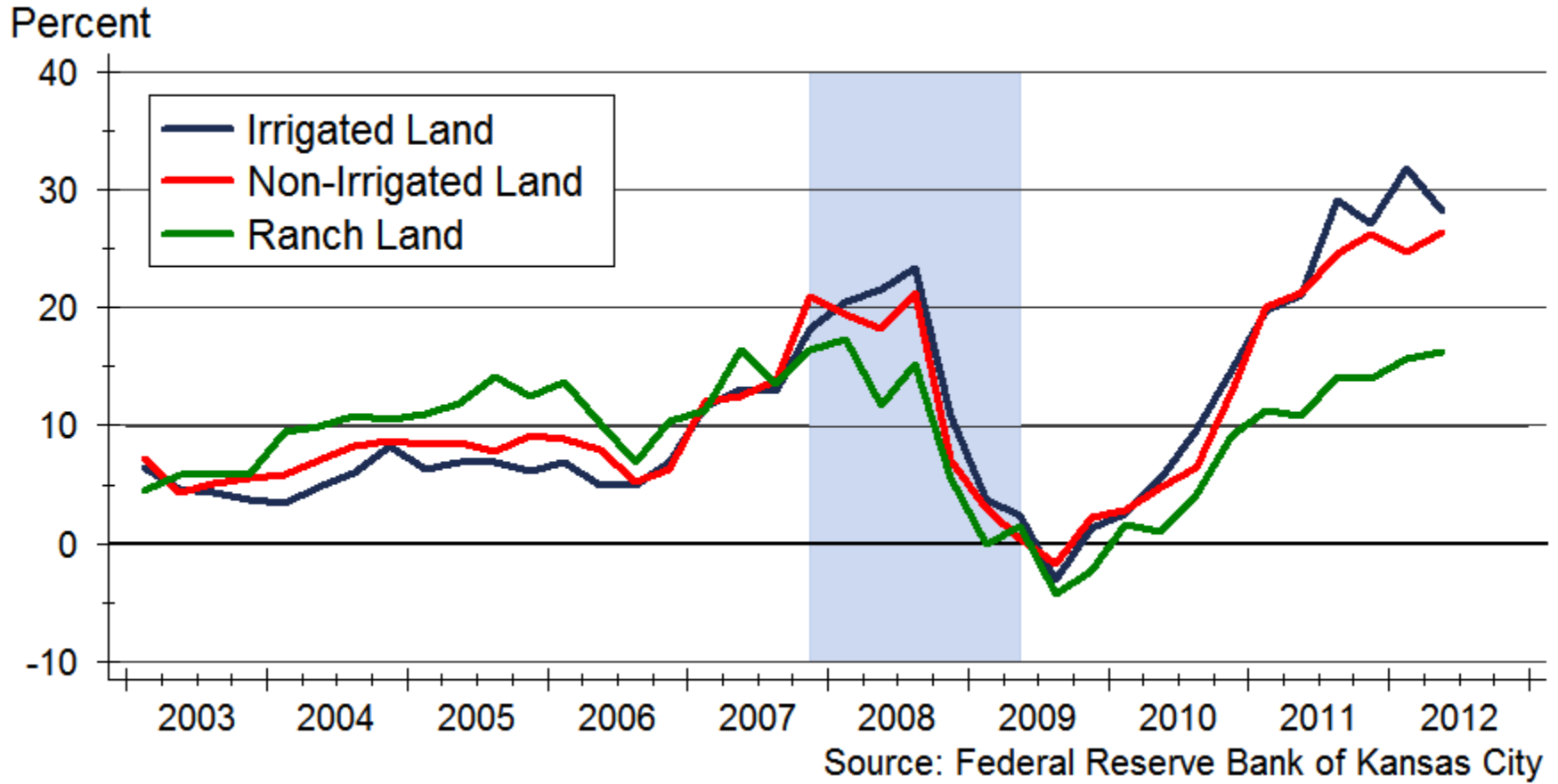
Source: Pittsburg Board of REALTORS®

Home Price Appreciation



Source: Federal Housing Finance Agency (FHFA)

Rural Land Prices



Kansas Forecast

	2010 Actual	2011 Actual	2012 Forecast	2013 Forecast
Total Home Sales	28,603 units -7.5%	28,155 units -1.6%	31,670 units +12.8%	33,760 units +6.3%
Building Permits	2,802 units +3.9%	3,144 units -17.3%	3,325 units +5.8%	3,095 units -6.9%
Home Price Appreciation	+0.3%	-0.9%	+1.7%	+1.5%

Sources: Participating Kansas REALTOR® MLS Systems; U.S. Bureau of the Census; Federal Housing Finance Agency; WSU Center for Real Estate

Kansas Housing Markets Forecast

- We forecast housing market activity for every major market in the state:
 - Kansas City, Lawrence, Manhattan, Topeka and Wichita, in addition to the state as a whole
- Analysis of these markets can be found at the end of this presentation and on the Center for Real Estate's website at

www.wichita.edu/realestate

Thanks once again to...



Security 1st Title

*for underwriting the cost of producing the
2013 Kansas Housing Markets Forecast*

WSU Center for Real Estate

Laying a Foundation for Real Estate in Kansas



WICHITA STATE
UNIVERSITY

W. FRANK BARTON
SCHOOL OF BUSINESS

