



**Kansas** HOUSING  
FORECAST  
A NEW PERSPECTIVE

# Thanks to the sponsors of this year's Kansas Housing Forecast...



Security 1<sup>st</sup> Title



CREDIT UNION  
*of America*

*Welcome to 80 Years of Friendly*

# Thanks also to the following REALTOR® boards and MLS systems:



South Central Kansas MLS



LAWRENCE  
Board of REALTORS®



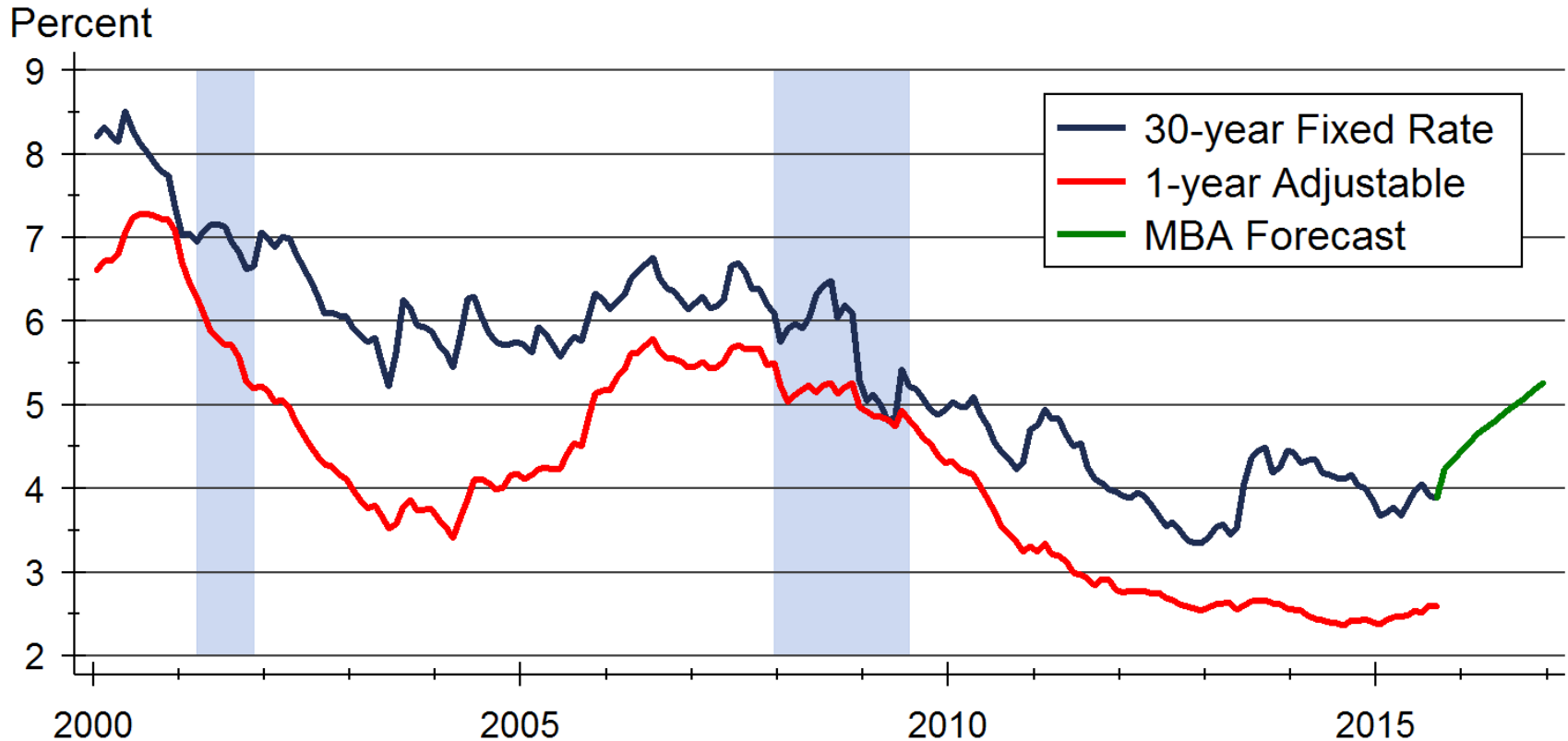
HEARTLAND MLS

KANSAS ASSOCIATION  
OF REALTORS®

and participating  
REALTOR® MLS systems  
across Kansas

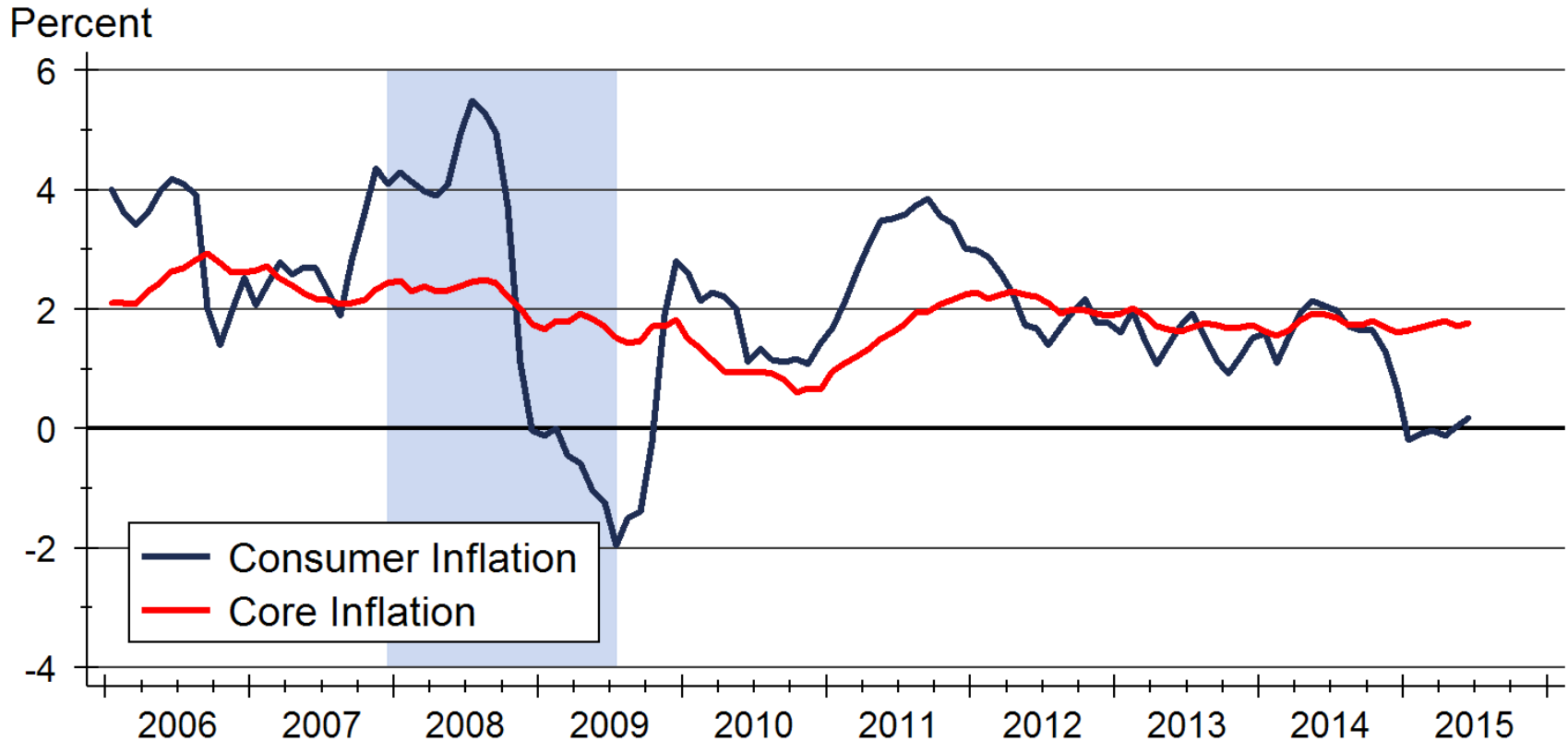


# Mortgage Rate Forecast



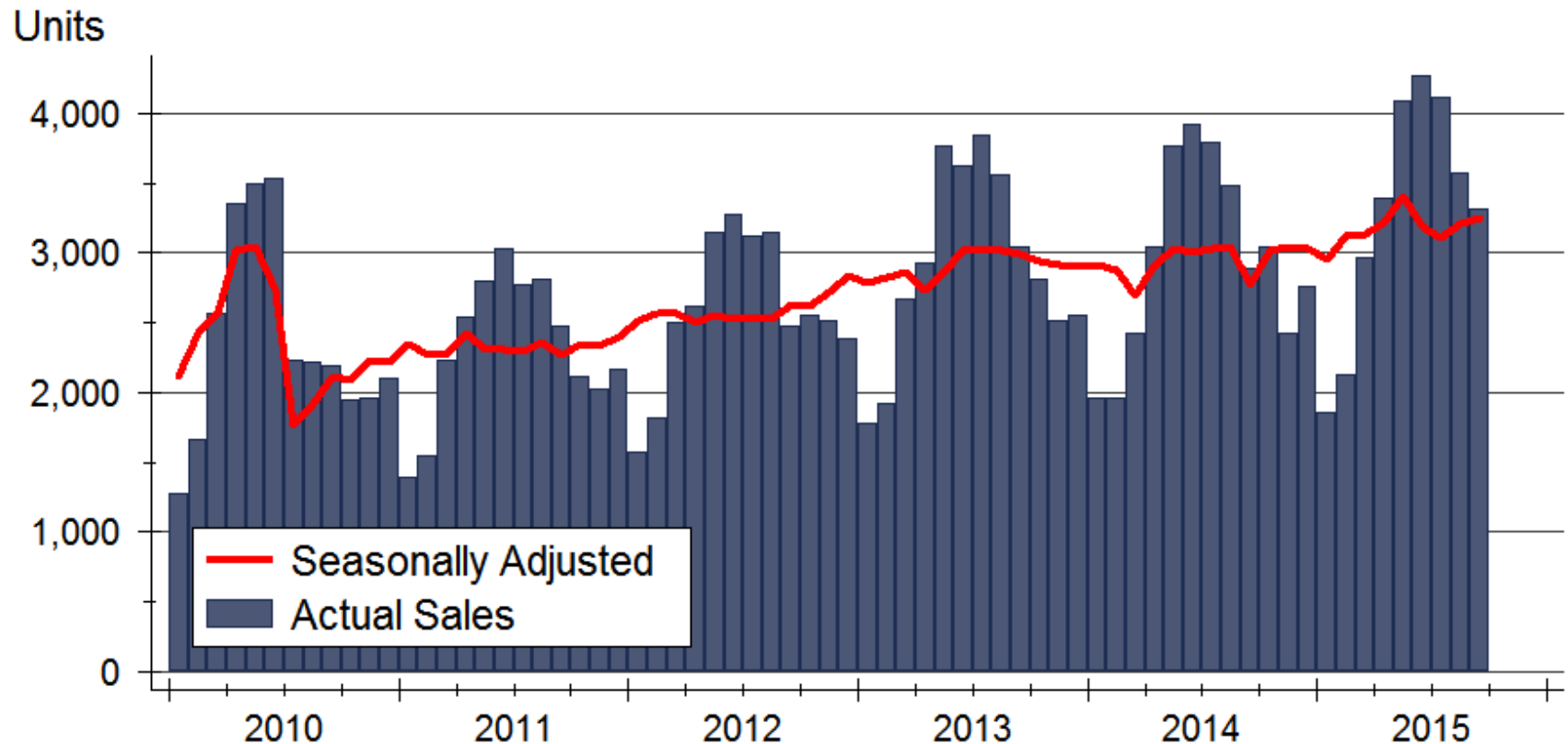
Sources: Freddie Mac; Mortgage Bankers Association

# Consumer Inflation



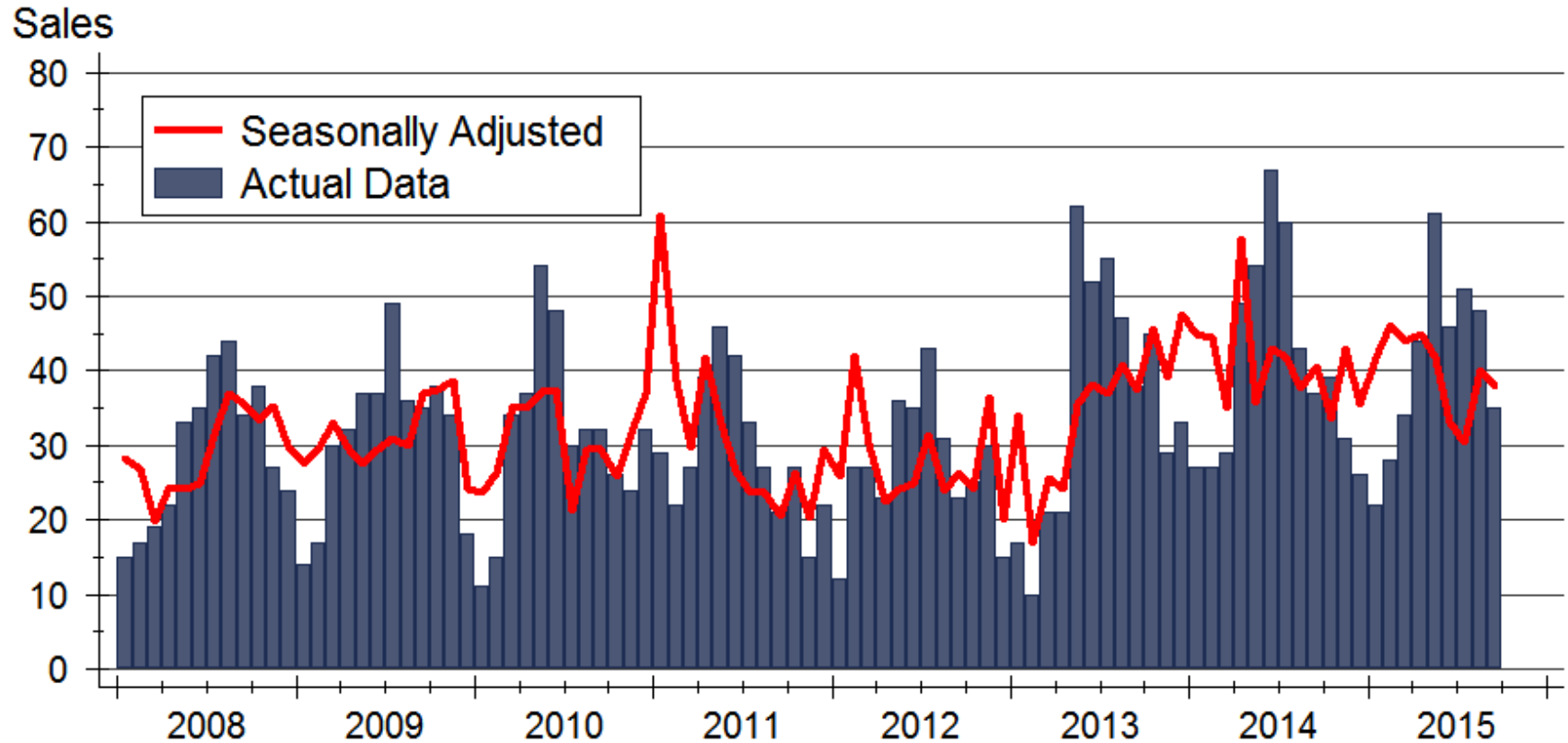
Source: U.S. Bureau of Labor Statistics

# Kansas Home Sales Activity



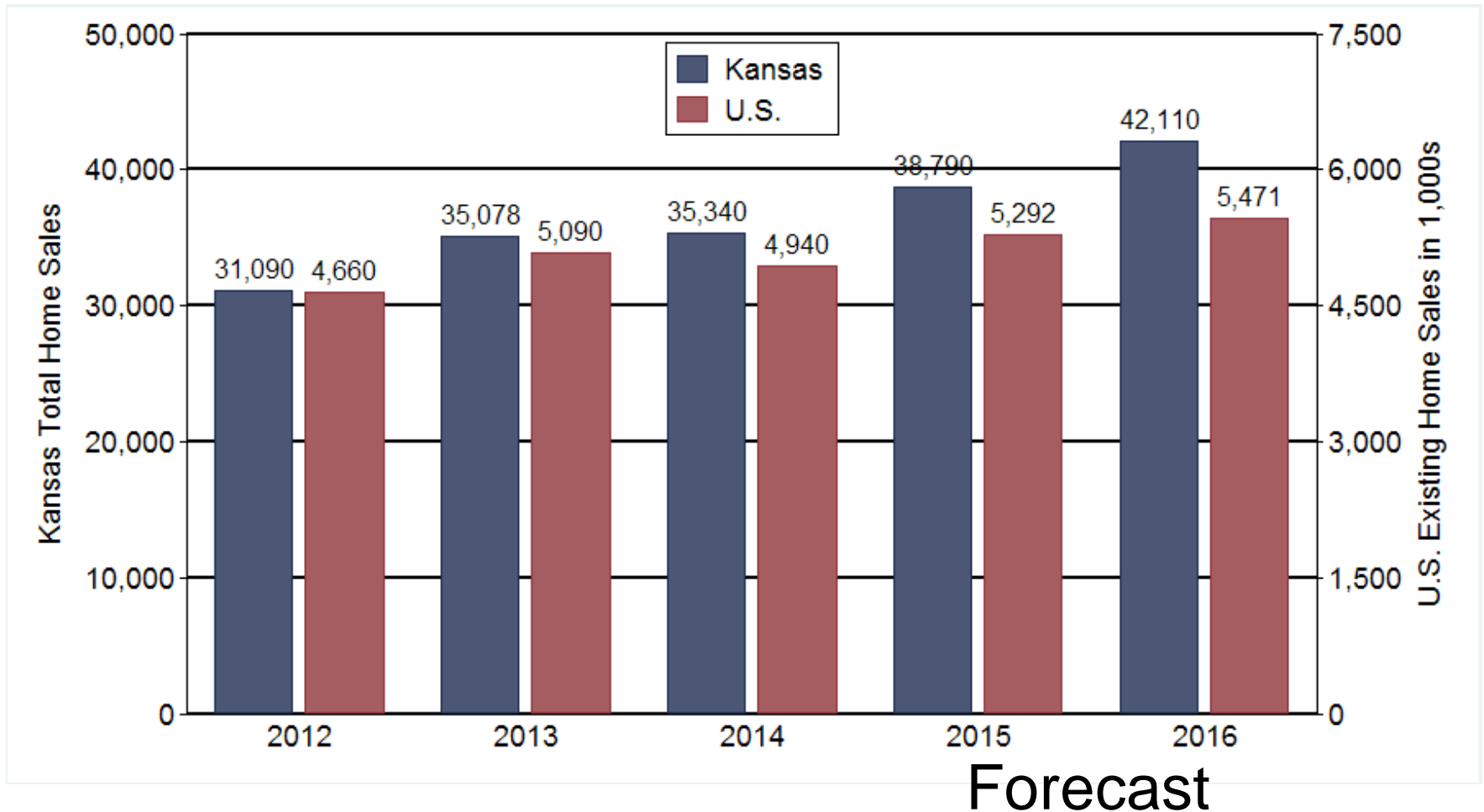
Source: Participating Kansas REALTOR® MLS systems

# Emporia Home Sales Activity



Source: Sunflower Association of REALTORS®

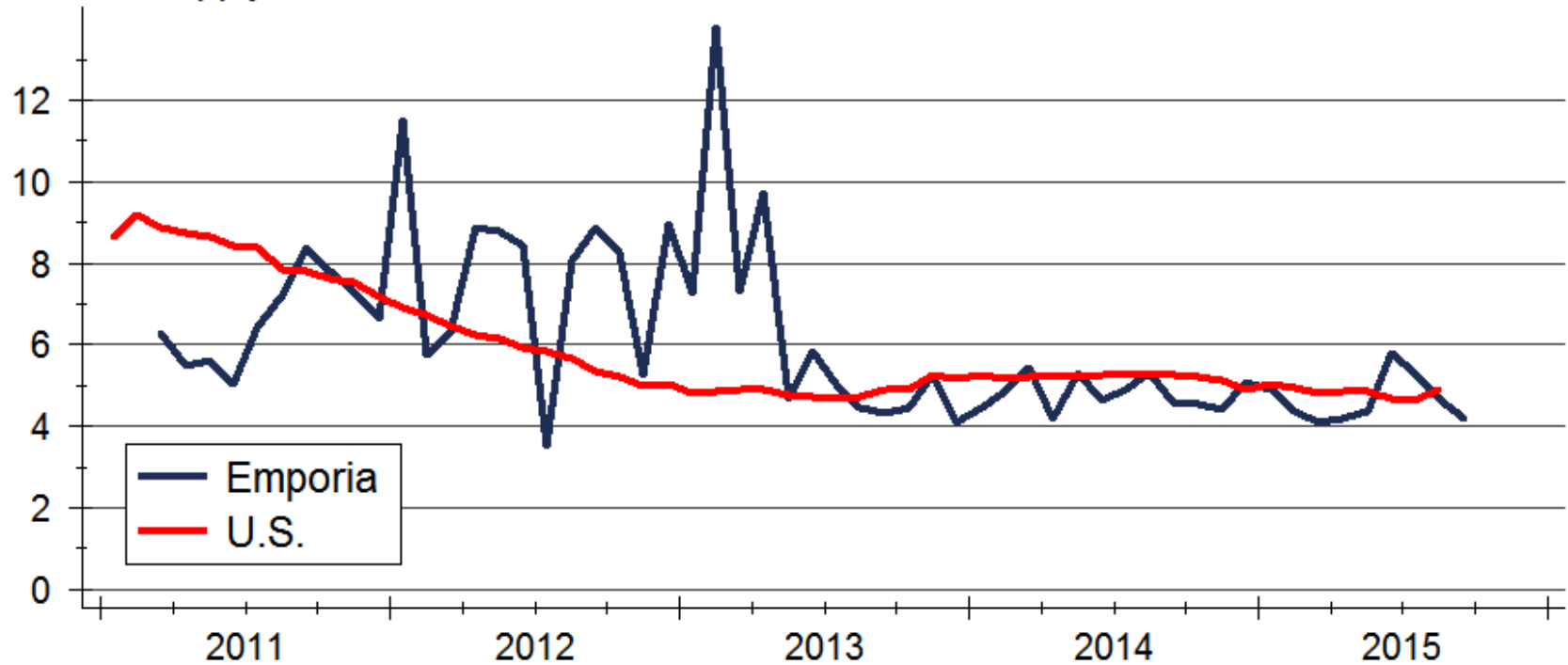
# Kansas Home Sales Forecast





# Inventories of Homes Available for Sale

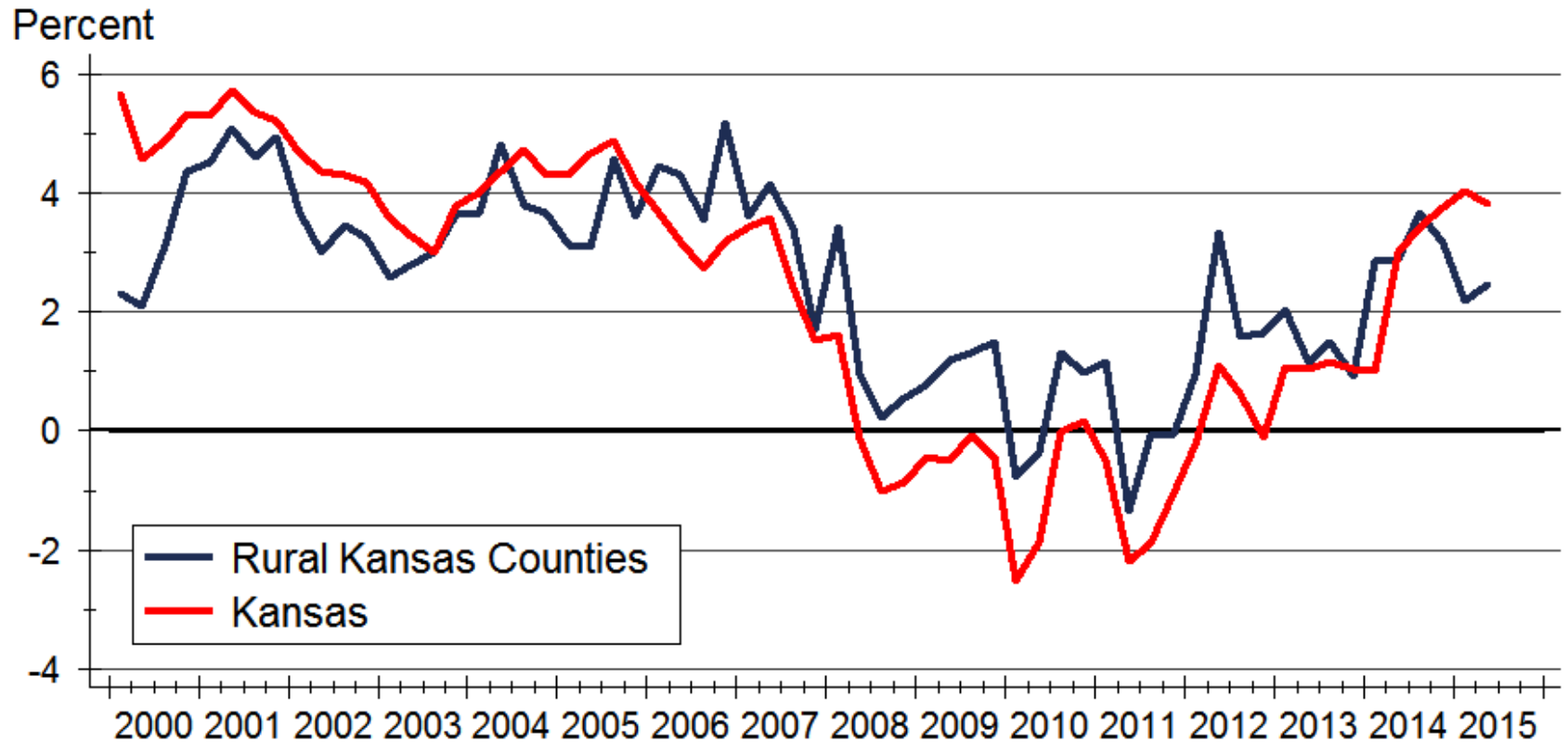
Months' Supply



Source: NAR and Sunflower Association of REALTORS®

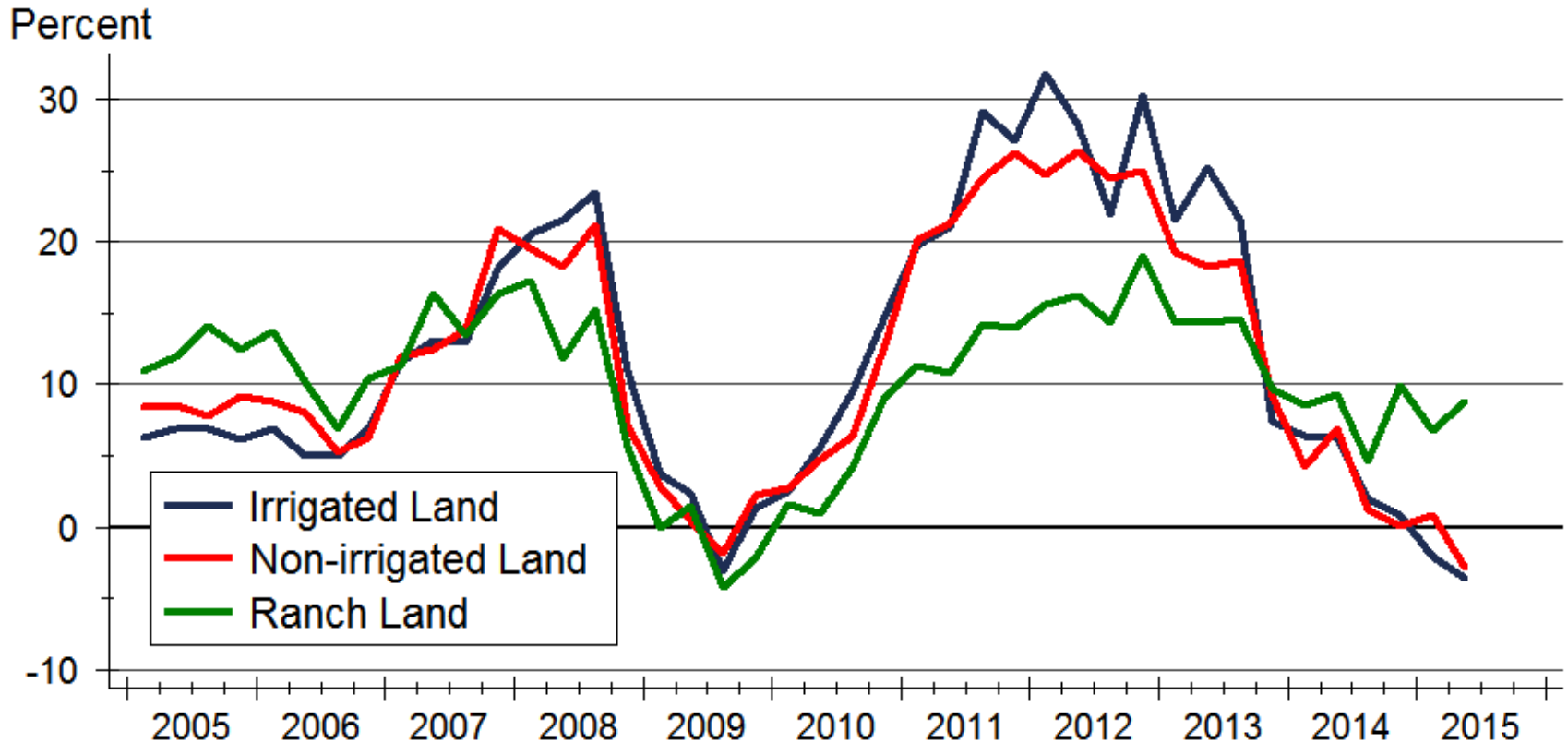
Note: Data are seasonally adjusted

# Home Price Appreciation



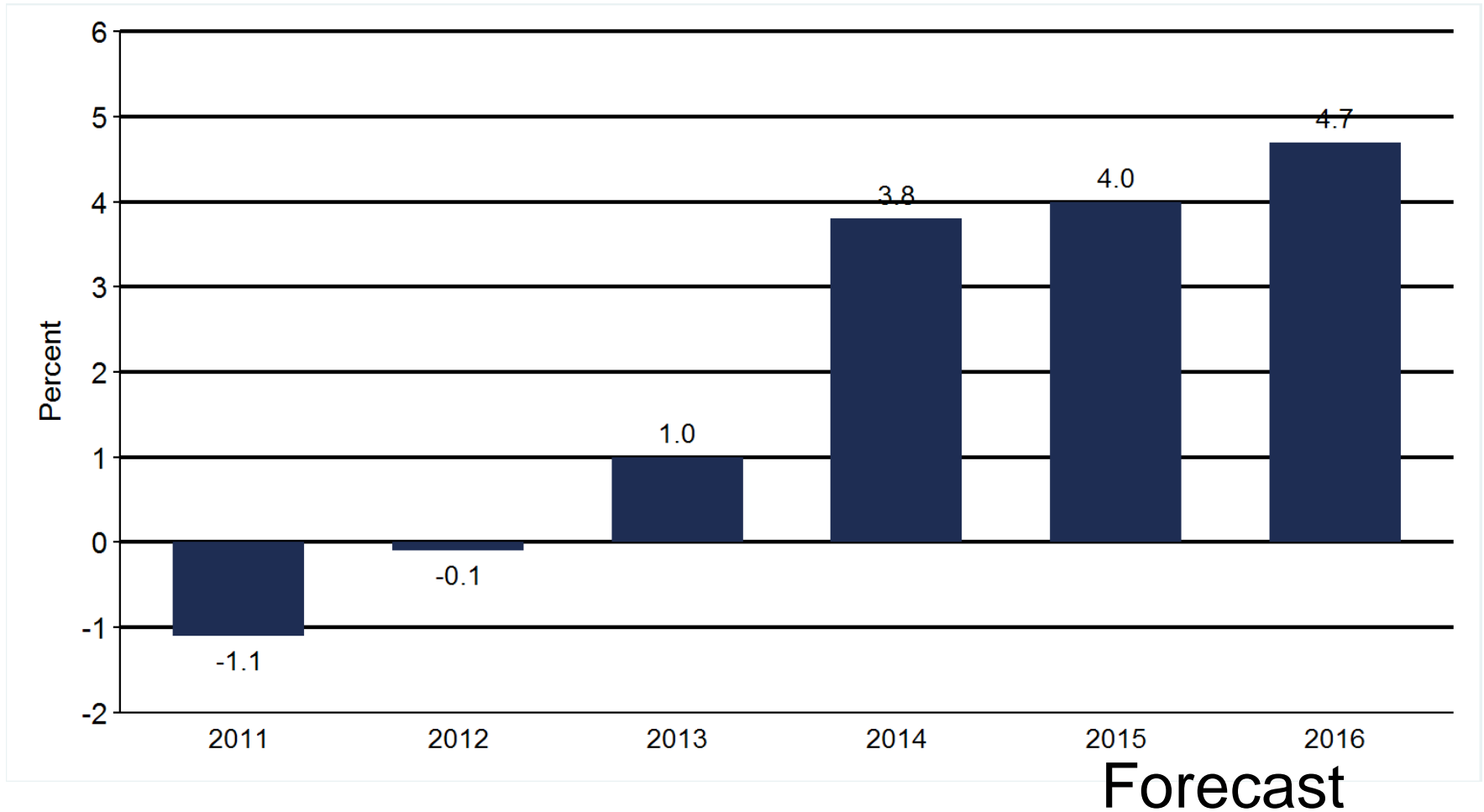
Source: Federal Housing Finance Agency (FHFA)

# Rural Land Values



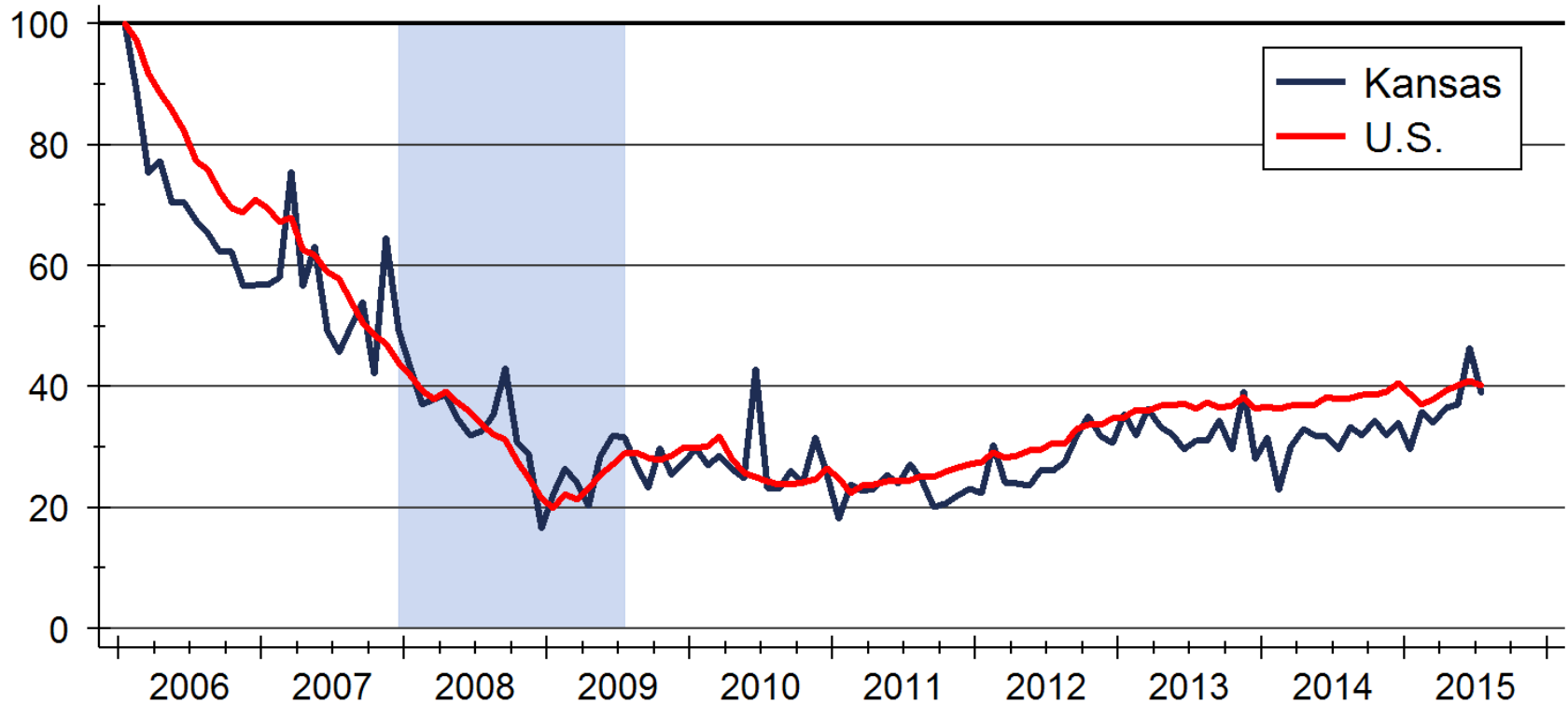
Source: Federal Reserve Bank of Kansas City

# Home Price Appreciation Forecast



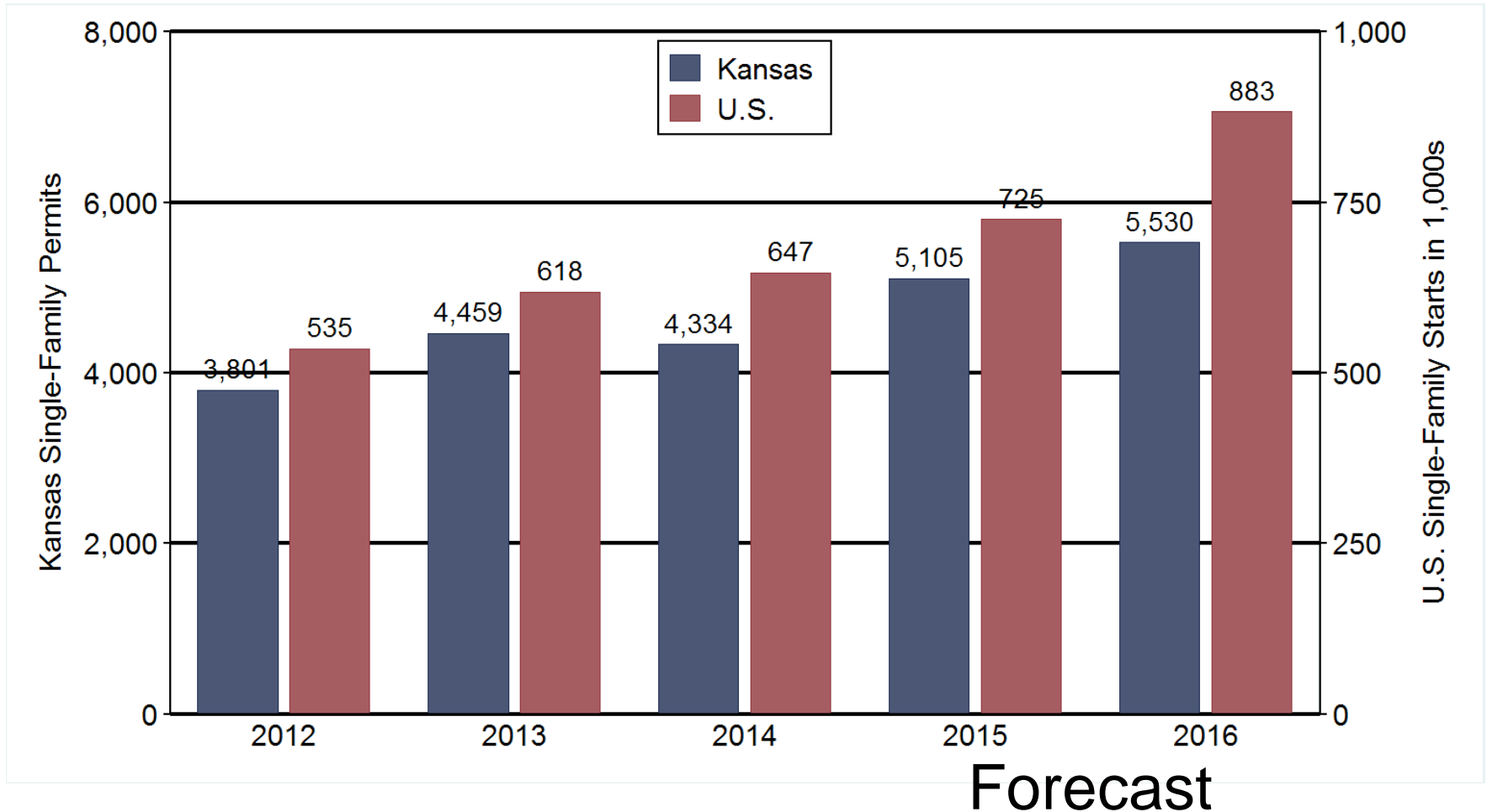
# New Single-Family Building Permits

Index: 2006m1 = 100



Source: U.S. Bureau of the Census

# Kansas Construction Forecast



# 2016 Housing Forecast

	<b>Kansas City</b>	<b>Lawrence</b>	<b>Manhattan</b>	<b>Topeka</b>	<b>Wichita</b>
Sales	38,280 units +7.3%	2,020 units +7.4%	950 units +9.2%	3,430 units +4.6%	9,970 units +3.3
Permits	5,260 units +11.0%	225 units -4.3%	175 units +6.1%	315 units +3.3%	1,065 units +4.9
Home Prices	+6.3%	+3.0%	+4.9%	+0.9%	+3.0%

Sources: Heartland MLS; Lawrence Board of REALTORS®; Manhattan Association of REALTORS®; Sunflower Association of REALTORS®; South Central Kansas MLS; U.S. Bureau of the Census; City of Manhattan; Federal Housing Finance Agency; WSU Center for Real Estate

# Thanks again to this year's Forecast sponsors...



Security 1<sup>st</sup> Title



CREDIT UNION  
*of America*

*Welcome to 80 Years of Friendly*

You can download a copy of the complete  
**2016 Kansas Housing Forecast**  
with specific information about Northeast Kansas at  
[www.wichita.edu/realestate](http://www.wichita.edu/realestate)



# WSU Center for Real Estate

## Laying a Foundation for Real Estate in Kansas



WICHITA STATE  
UNIVERSITY

W. FRANK BARTON  
SCHOOL OF BUSINESS

